










# Retinol-binding protein 4 in obesity

Contributors: ,  Anna Maria Rychter <sup>1</sup> ,  Marzena Skrzypczak-Zielinska <sup>2</sup> ,  Aleksandra Zielinska <sup>3</sup> ,  Piotr Eder <sup>4</sup> ,  Eliana B. Souto <sup>5</sup> ,  Agnieszka Zawada <sup>6</sup> ,  Alicja Ewa Ratajczak <sup>7</sup> ,  Agnieszka Dobrowolska <sup>8</sup> ,  Iwona Krela-Kaźmierczak <sup>9</sup>

1, Department of Gastroenterology, Dietetics and Internal Diseases, Poznan University of Medical Sciences, Poland; a.m.rychter@gmail.com

2, Institute of Human Genetics, Polish Academy of Sciences, Strzeszyńska 32, 60-479 Poznań, Poland; mskrzypczakzielinska@gmail.com

3, Department of Pharmaceutical Technology, Faculty of Pharmacy / University of Coimbra Institute of Human Genetics / Polish Academy of Sciences; zielinska-aleksandra@wp.pl

4, Department of Gastroenterology, Dietetics and Internal Diseases, University of Medical Sciences Poznan.; piotr.eder@op.pl

5, Department of Pharmaceutical Technology, University of Coimbra (FFUC), Coimbra Centre of Biological Engineering, University of Minho, Braga; souto.eliana@gmail.com

6, Department of Gastroenterology, Dietetics and Internal Diseases, Poznan University of Medical Sciences, Poland; aga.zawada@gmail.com

7, Department of Gastroenterology, Dietetics and Internal Diseases, Poznan University of Medical Sciences, Poland; alicjaewaratajczak@gmail.com

8, Department of Gastroenterology, Dietetics and Internal Diseases, Poznan University of Medical Sciences, Poland; agdob@ump.edu.pl

9, Department of Gastroenterology, Dietetics and Internal Diseases, Poznan University of Medical Sciences, Poland; krela@op.pl

Version received: 8 August 2020



## Definition

Although many preventive and treatment approaches have been proposed, cardiovascular disease (CVD) remains one of the leading causes of deaths worldwide. Current epidemiological data require the specification of new causative factors, as well as the development of improved diagnostic tools to provide better cardiovascular management. Excessive accumulation of adipose tissue among patients suffering from obesity not only constitutes one of the main risk factors of CVD development but also alters adipokines. Increased attention is devoted to bioactive adipokines, which are also produced by the adipose tissue. The retinol-binding protein 4 (RBP4) has been associated with numerous CVDs and is presumably associated with an increased cardiovascular risk. With this in mind, exploring the role of RBP4, particularly among patients with obesity, could be a promising direction and could lead to better CVD prevention and management in this patient group.

[Table of Contents](#) [\[Hide\]](#)

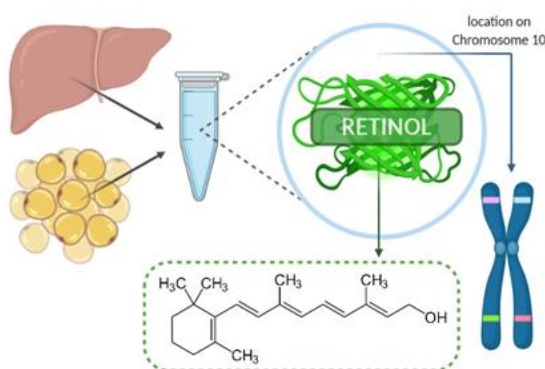
## 1. Introduction

Cardiovascular disease (CVD) constitutes the most common cause of death in European countries, accounting for 2.2 million deaths in females (47% of all-cause of deaths) and 1.9 million deaths in males (39% of all-cause of deaths) [\[1\]\[2\]\[3\]\[4\]](#). Additionally, it is responsible for 37% and 34% of all years lost (measured by potential years of life lost, PYLL) among females and males, respectively [\[1\]](#). Not only is CVD a health issue, but it also involves a significant socio-economic impact [\[1\]](#). It is estimated that by 2030 the total cost of CVD will rise to USD 1044 billion [\[5\]](#). Currently, more than half (55%) of the costs is derived from direct healthcare (report on Accident and Emergency departments, medications; inpatient-, outpatient-and primary care) and 45% of the costs originate from the informal care and productivity loss due to morbidity and mortality [\[4\]](#). The major risk factors of CVD development have been identified in the Framingham Heart Study and INTERHEART case-control study [\[6\]\[7\]](#). Eight risk factors and health behaviors (hypertension, dyslipidemia, diabetes, obesity, smoking, alcohol, diet, sedentary lifestyle) are the World Health Organization's (WHO) targets for reduction by 2025 [\[8\]](#). Obesity is a serious health problem and, if the current trends continue, in the next ten years, almost 40% and 20% of the global adult population will be suffering from overweight and obesity, respectively [\[9\]](#). Currently, it is estimated that over 3 million patients worldwide die due to excessive body weight [\[10\]](#). Moreover, obesity may influence cardiovascular risk by means of the presence of obesity-related comorbidities, hemodynamic repercussions, body fat mass content and distribution [\[11\]\[12\]\[13\]](#). All-cause mortality increased log-linearly throughout the overweight range, with the hazard ratio (HR) of 1.39 per 5 kg/m<sup>2</sup> [\[14\]](#). Excessive accumulation of adipose tissue, particularly visceral fat (VF), contributes to a higher prevalence of hypertension, dyslipidemia, and glucose intolerance, which lead to CVD development [\[15\]\[16\]\[17\]](#). Adipose tissue also regulates many systemic and pathological processes due to the secretion of bioactive proteins—adipokines [\[18\]](#). Most of them—e.g., tumor necrosis factor- $\alpha$  (TNF- $\alpha$ ); IL-6: interleukin (IL-6)—have pro-inflammatory properties and have been associated with vascular and atherothrombotic complications in atherosclerosis, since they influence the function of endothelial cells, arterial smooth muscle cells, and macrophages in the vessel walls [\[19\]\[20\]\[21\]\[22\]\[23\]](#). However, few of them may have a protective effect in CVD (e.g., adiponectin). In fact, among patients with obesity, the secretion of adipokines is frequently abnormal [\[24\]](#). We have characterized one of the novel adipokines—retinol-binding protein 4 (RBP4), with a particular emphasis on its

role in obesity and CVD development. However, there is an ongoing controversy with regard to any RBP4 role in both inflammation and CVD prediction. Thus, more reviews and research studies are still necessary.

## 2. Role and Structure of RBP4

Retinol-binding protein 4 (RBP4), presented in Figure 1, belongs to the lipocalin family and has a tertiary structure known as the 'lipocalin fold' which facilitates the binding of small hydrophobic molecules, such as lipids [19]. RBP4 is synthesized and secreted in the liver (mostly) and other tissues, such as adipose tissue [24]. It transports vitamin A (retinol) from the liver to target tissues and constitutes a major regulator of circulating levels of retinol [25]. RBP4 is transferred within the bloodstream in combination with transthyretin (TTR), which prevents kidney filtration and catabolism of RBP4 [26]. The receptor proteins for RBP4 are STRA6 (stimulated by retinoic acid gene 6) and RBPR-2 (RBP4-receptor 2) [26]. In fact, urinary excretion of RBP4 may be a useful marker for the detection of renal dysfunction [27][28]. In patients with chronic kidney disease (CKD), higher serum RBP4 levels were associated with a higher rate of cardiovascular events and higher mortality, which suggests that RBP4 levels may indicate an increased risk of cardiovascular risk within this group [29]. In the Bobbert et al. study, serum RBP4 levels were also higher in diabetic patients compared to nondiabetic individuals, although not in terms of the levels of retinol and transthyretin [30]. Nevertheless, it should be emphasized that RBP4, retinol, and retinoic acid can differentially affect CVD and metabolic diseases [31]. Therefore, vitamin A metabolism should be taken into consideration when investigating the role of RBP4 since it can act by itself or affect retinol metabolism and retinoic acid signaling [32]. Additionally, vitamin A deficiency reduces serum RBP4 levels, and, hence, it is essential to evaluate not only the metabolism of vitamin A but also its dietary intake when assessing RBP4 concentrations [33]. A decrease in adipose tissue GLUT4 expression, which is the major glucose transporter protein mediating glucose uptake, leads to increased serum RBP4 levels associated with the induction of insulin resistance in the liver and muscle [34]. It has been shown that moderate weight reduction lowers serum RBP4 levels in nondiabetic subjects [27]. However, new evidence suggests that RBP4 plays a more significant role in the lipid metabolism than in insulin resistance [35]. One of the questions regarding RBP4 is which of its serum concentrations are normal, and which are pathological. In healthy individuals, normal serum RBP4 ranges from 10 to 50 µg/mL (without vitamin A deficiency), but among individuals with Type 2 diabetes (T2DM), CVD or obesity, it may reach up to 150 µg/mL [26][30][33][34][36][37][38][39]. In the study led by Farjo et al., the most substantial influence on pro-inflammatory molecules was achieved with RBP4 serum concentrations of 100 µg/mL [40]. However, lower concentrations in the range of 10 to 25 µg/mL were also shown to be enough to influence pro-inflammatory molecules, which suggest that endothelial cells may be responsive to even small elevations in serum RBP4 concentrations [33][40][41]. RBP4 is also known as a negative acute-phase reactant, and hospitalization may decrease its serum levels [33]. Therefore, the choice of the assay employed in the measurement of serum RBP4 levels should also be careful. As Graham et al. presented in their study, quantitative Western blotting is the most reliable method for assaying serum RBP4 elevations associated with insulin resistance [39]. However, other measurement methods—e.g., ELISA (enzyme-linked immunosorbent assay), EIA (enzyme immunoassay)—are also widely used in various populations [42]. Additionally, RBP4 concentrations were found to be different among men and women. Some research studies indicated that RBP4 was significantly higher in men than in women, including adolescent boys and girls, whereas no such association was observed in other studies [35][43][44]. This could be explained by different amounts and distribution of the adipose tissue (including liver fat), the influence of the sex hormones, and iron metabolism [44][45][46]. RBP4 levels were also markedly different between premenopausal and postmenopausal healthy women, with higher levels among the second group [47]. The summary of measurement methods and serum RBP4 range in the selected studies, according to CVD risk assessment, are listed in Table 1.



**Figure 1.** Retinol-binding protein 4 (RBP4).

**Table 1.** The summary of measurement methods and serum retinol-binding protein 4 (RBP4) range in studies assessing cardiovascular (CV) risk.

Authors	Study Population	Groups, Sex (Group Size, n)	Age (Years)	BMI (kg/m <sup>2</sup> )	CV Risk Assessment Method	CV Risk (Group Size, n)	RBP4 Measurement Method (Unit)	RBP4 Specimen	Serum RBP4 Range	Relation between RBP4 and CV Risk
---------	------------------	-----------------------------	-------------	--------------------------	---------------------------	-------------------------	--------------------------------	---------------	------------------	-----------------------------------

Feng et al. 2015 <a href="#">[48]</a>	T2DM	498 F; 578 M (1076)	62.80 ± 13.60	27.50 ± 4.20	cIMT (mm)	G 1 (332): no abnormalities	ELISA (mg/L)	serum	G 1 32.10 ± 10.3	+	
				27.90 ± 3.40		G 2 (386): ≥ 1			G 2 38.20 ± 8.30		
				27.60 ± 3.60		G 3 (358): ≥ 1.5			G 3 46.90 ± 7.60		
Xiao et al. 2013 <a href="#">[19]</a>	T2DM	140 F; 144 M (284)	35.00– 70.00	25.10 ± 2.80	cIMT (mm)	subAS (78) cIMT 0.94 ± 0.34	ELISA with monoclonal antibodies (mg/L)	serum	37.1 (32.3– 40.8)	+	
				24.50 ± 2.80	fIMT (mm)	fIMT 0.97 ± 0.33			23.2 (20.1– 29.2)		
					iIMT (mm)	Non-subAS cIMT 0.70 ± 0.11					23.2 (20.1– 29.2)
					fIMT 0.70 ± 0.11						
					iIMT 0.76 ± 0.10						
Won et al. 2012 <a href="#">[49]</a>	Healthy	175 F; 116 M (291)	40.00 ± 11.00	23.60 ± 3.00	The Framingham Risk Score	MetS (57) Framingham risk: 2.0, 0.0 to >30.0 Framingham score: 9.0, –7.0 to 17.0	EIA (µg/mL)	plasma	MetS 65.1 ± 26.8 Non- MetS 52.2 ± 20.0	+	
						Non-MetS (234) Framingham risk: 0.5, 0.0 to 20.0 Framingham score: 3.0, –9.0 to 18.0					

Su et al. 2020 <a href="#">[29]</a>	CKD	58 F; 111 M (169)	59.50– 78.00	27.40 ± 2.90	CV events (fatal and nonfatal)	(total 80)  CV events: 41  CV mortality: 10	ELISA (mg/L)	serum		+  (higher rates of CV events than RBP4 < 33.86)
Solini et al. 2009 <a href="#">[38]</a>	HYP	35 F	47.40 ± 5.00	25.00 ± 1.60	cIMT (mm)	0.54 ± 0.15	ELISA (µg/mL)	plasma	Median value  38.75	+  
Mansouri et al. 2012 <a href="#">[50]</a>	T2DM	53 F; 48 M (101)	53.60 ± 8.40	27.70 ± 4.10	cIMT (mm)	0.8 ± 0.2	ELISA (µg/mL)	serum	71.9 ± 35.6	None
Bobbert et al. 2010 <a href="#">[30]</a>	T2DM and non-T2DM	52 F; 44 M (96)	55.00 ± 1.30	30.80 ± 0.70	cIMT (mm)	0.72 ± 0.02	ELISA (µmol/L)	serum	1.89 ± 0.05	+
Chu et al. 2011 <a href="#">[51]</a>	T2DM with CKD	86 (sex NM)	70.00 ± 11.00	26.20 ± 6.20	cIMT (mm)	0.75 ± 0.16	ELISA (µg/mL)	serum	44.8 ± 6.4	None
Li et al. 2020 <a href="#">[52]</a>	CHF	227 F; 707 M (934)	≥60	22.49– 26.67	MACE (Multivariable Cox regression)	-	ELISA (µg/mL)	serum	46.66 ± 12.38	+ (log RBP4 associated with 1.6 times higher risk of MACE)
Bachmayer	Patients	65 F;	43.00 ±	50.00 ±	Endothelial dysfunction:	CRAE 178 ± 19	ELISA		24,773	None

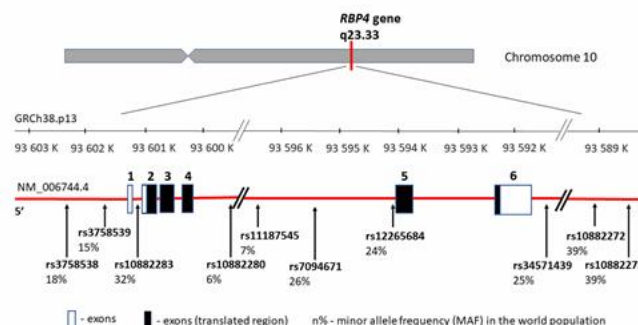
et al. 2013 [53]	with obesity	27 M (92)	10.00	7.00	CRAE ( $\mu\text{m}$ ); CRVE ( $\mu\text{m}$ ); AVR	CRVE $221 \pm 24$  AVR $0.81 \pm 0.09$	(ng/mL)	NM	$\pm$ 14,025	None  None
---------------------	-----------------	--------------	-------	------	---	--	---------	----	-----------------	------------------

F—female, M—men,  $\pm$  SDs, T2DM—Type 2 diabetes mellitus, G—group, ELISA—enzyme-linked immuno-absorbent assay, CV—cardiovascular, IMT—intima-media thickness, cIMT—carotid intima-media thickness, fIMT—femoral intima-media thickness, iIMT—common iliac intima-media thickness, subAS—subclinical atherosclerosis, EIA—enzyme immunoassay, MetS—metabolic syndrome, CKD—chronic kidney disease, HYP—hypertensive, CTL—normotensive, +—positive, NM—not mentioned, CHF—chronic heart failure, MACE—major adverse cardiac event(s) (cardiovascular death and rehospitalization due to the deterioration of CHF), CRAE, CRVE—central retinal artery/vein equivalent, AVR—arterio-venous-ratio.

### 3. *RBP4* Gene—Structure and Polymorphism vs. CVD in Obesity

*RBP4* protein is encoded by the same name gene—*RBP4* (MIM 180250) located on chromosome 10 (10q23.33) between coordinates 93,591,694 and 93,601,744 bp according to human genome reference assembly GRCh38.p13 (Figure 2). It encompasses 10,050 bp of genomic DNA and consists of 6 exons, including five coding fragments. Transcript length is 1070 bp, and the translation product consists of 201 amino acids.

Since *RBP4* may be correlated with conditions related to T2DM, obesity, or CVD, the *RBP4* gene may constitute the gene carrying obesity-related implications [54]. Additionally, the *RBP4* gene location is close to a region linked with an increased risk of T2DM and elevated fasting blood glucose levels [55][56][57]. Thus, it has been proposed that functional *RBP4* gene polymorphisms influence a higher obesity incidence, insulin resistance, hyperinsulinemia, T2DM, and artery thickness [26]. These hypotheses were confirmed by research carried out in recent years by several research teams. The most significant *RBP4* gene variants connected with CVD and its markers are summarized in Table 2 and presented in Figure 2, with the distribution of each *locus* and the minor allele frequency (MAF) occurrence in the world population based on 1000 Genomes Project data (phase 3; <https://www.internationalgenome.org/>). It is worth noting that all of the listed variants are located outside the coding gene region and that there can be a potential relationship between the regulation and the change in gene expression levels.



**Figure 2.** *RBP4* gene structure, chromosome location, and cardiovascular disease (CVD) variants distribution. rs—number of the reference sequence in the National Center of Biotechnological Information database.

**Table 2.** *RBP4* gene variants investigated as risk factors of cardiovascular diseases in obesity.

Variant	Genetic Location	Study Group		Pathophysiology Association	Reference
		n (Total)	Diagnosis		
rs10882280	g.6681G > T				
	c.355+837G > T (intronic)		healthy		
		1422 F; 414 M (1836)	(metabolic, cardiovascular, or endocrine disease	Higher high-density lipoprotein level associated with minor allele T ( $p = 0.043$ ) and C ( $p = 0.042$ ), respectively	Shea et al. 2010 [58]

rs11187545	g.8889T > C	excluded)			
	c.355+3045T > C (intrinsic)				
rs10882283	g.5030T > G	457 F;		G-allele associated	Kovacs et al. 2007 <a href="#">[59]</a>
	c. -55T > G (5' UTR variant)	477 M (934); 716 CTL	T2DM	with a higher body-mass index and waist-to-hip ratio values ( $p < 0.05$ ).	
rs10882273	g.27484T > C	457 F;		C-allele	Kovacs et al. 2007 <a href="#">[59]</a>
	c.*1539T > C (3' UTR variant)	477 M (934); 716 CTL	T2DM	associated with an increased BMI, plasma insulin, and circulating free fatty acid concentrations ( $p < 0.05$ )	
rs10882272	g.26761T > C	1787 F;	Chinese Hans population 50–70 years old	Higher body-mass index values. Higher insulin and free fatty acids levels.	Wu et al. 2009 <a href="#">[60]</a>
	c.*816T > C (3' UTR variant)	1423 M (3210)		Association with plasma RBP4 levels ( $p = 0.005$ ).	
rs10882272	g.26761T > C	593 F;	French-Canadian founder population	Association with circulating retinol levels. Modulation between vitamin A intake and abdominal adiposity.	Goodwin et al. 2015 <a href="#">[61]</a>
	c.*816T > C (3' UTR variant)	454 M (947)	12–18 years old		
rs3758538	g.3944A > C	5 006	Caucasian cohorts from Finland, USA, and Italy	Association with circulating retinol levels.	Mondul et al. 2011 <a href="#">[62]</a>
	c.697–1781A > C (upstream transcript variant)	97 with obesity; 83 normal-weight	Spanish Caucasian children	Association with triglycerides levels and plasma RBP4 levels. C allele associated with obesity and higher BMI z-score.	
rs3758539	g.4406G > A	1787 F;	Chinese Hans population 50–70 years old	Association with hypertriglyceridemia and plasma RBP4 levels.	Wu et al. 2009 <a href="#">[60]</a>
	c.697-2243G > A (upstream transcript)	1423 M (3210)			
rs3758539	g.4406G > A	97 cases	Obesity, Spanish Caucasian children	Association with triglycerides levels in children.	Codóner-Franch et al. 2016 <a href="#">[54]</a>
	c.697-2243G > A (upstream transcript)	83 CTL			

variant)	66 F;				
	63 M	Obesity,			
	(129)	cohort from Iran	Association with an increased susceptibility for obesity and an increased BMI.	Shajarian et al. 2015 <a href="#">[55]</a>	
	192 CTL				
g.12177G > A	rs12265684	c.356-25G > A		Association with triglycerides levels and blood pressure.	
	(intronic)				
	97 cases	Obesity,			Codóner-Franch et al. 2016 <a href="#">[54]</a>
	83 CTL	Spanish Caucasian children			
g.14684T > G	rs34571439	c.697-12521A > C		Association with triglycerides and plasma RBP4 levels as well as plasma C-reactive protein values.	
	(upstream transcript variant)				
	g.10377C > T				
	297 M;				
rs7094671	c.356-1825C > T	217 M CTL	CAD, Chinese patients	G allele associated with a higher risk of CAD	Wan et al. 2014 <a href="#">[62]</a>
	(intronic)				

rs—number of the reference sequence in the National Center of Biotechnological Information database, UTR—untranslated region, F—female, M—men, CTL—controls, T2DM—Type 2 diabetes mellitus, CAD—coronary artery disease.

#### 4. RBP4, Obesity, and Metabolic Syndrome

As mentioned before, the secretion of adipokines is frequently abnormal among patients with obesity. Adipocyte hypertrophy, ectopic fat accumulation, and adipose tissue inflammation may cause adverse adipokine secretion, which, in turn, can be associated with a number of health consequences, including metabolic, inflammatory, or cardiovascular diseases [\[63\]](#). However, in several studies, RBP4 levels were higher among individuals with obesity in comparison to control groups. In other studies, no such correlation has been found. In the Korek et al. study, RBP4 levels did not correlate with BMI or fat mass and did not differ between individuals with obesity and those without obesity—RBP4 levels in both groups were  $33.93 \pm 4.46$  and  $32.53 \pm 2.53$  µg/mL, respectively [\[64\]](#). Similar results were reported by other authors [\[65\]\[66\]\[67\]\[68\]](#). On the other hand, certain studies demonstrate increased RBP4 concentrations among individuals with obesity, as well as the association between RBP4 and BMI [\[36\]\[69\]](#). Therefore, it has been suggested that RBP4 concentrations may not be related necessarily to obesity itself, but to the location of the adipose tissue. The expression seems to be higher in visceral (VF) than in the subcutaneous tissue (SF); thus, RBP4 levels are more closely associated with VF levels and appear to constitute the best indicator of intra-abdominal adipose mass [\[35\]\[70\]\[71\]](#). RBP4 may be the mechanistic link between the visceral adiposity and increased cardiovascular risk associated with this type of adipose tissue [\[49\]\[71\]](#). In the study by Lee et al., RBP4 levels were correlated with visceral fat areas, but not with the total body fat (wt.%), and, as the authors suggested, RBP4 could be the link between visceral obesity and atherosclerotic vascular changes [\[72\]](#). Furthermore, RBP4 levels may also be prone to weight loss. In fact, serum RBP4 levels decreased considerably by 25.5% after weight reduction—almost 11% of weight loss in the course of a 16-week program [\[27\]](#). However, it is essential to point out that in addition to a reduced caloric intake by 600 kcal/day, sibutramine was also used. Interestingly, the statistically significant increase in RBP4 levels was also observed in patients undergoing bariatric surgery—RBP4 levels (ng/mL) were  $22,456.5 \pm 13,158.8$  and  $31,342.2 \pm 8172.5$  in pre- and post-bariatric periods, respectively [\[68\]](#). In two different studies, RBP4 levels decreased significantly following bariatric surgery [\[69\]\[70\]](#). According to Zachariah et al., participants with serum (log-transformed) RBP4 levels at the 4th quartile presented a 75% higher risk of developing the metabolic syndrome when compared to



patients in the 1st quartile [73]. Moreover, in the study by Karamfilova et al., RBP4 levels  $\geq 55$  mcg/mL were associated with a 3.1 higher risk of developing metabolic syndrome [74]. Other studies also have confirmed the relationship between the components of metabolic syndrome and RBP4 levels [65][66]. Additionally, RBP4 can also be a predictor for the diagnosis of metabolic syndrome and weight regain [70][74][75]. In fact, Vink et al. demonstrated that RBP4 was a predictor of weight regain—stronger in men and individuals following a low-calorie diet than in women and individuals following a very-low-calorie diet [75].

Possible explanations regarding different concentrations or changes in RBP4 may include both ethnic and age differences (e.g., presence of renal dysfunction) [66]. Despite different data, there is still a strong association between RBP4 and obesity.

## References

- Adam Timmis; Nicholas Townsend; Chris P Gale; Aleksandra Torbica; Maddalena Lettino; Steffen E Petersen; Elias A Mossialos; Aldo Pietro Maggioni; Dzianis Kazakiewicz; Heidi T May; et al. Delphine De Smedt Marcus Flather Liesl Zuhlke John Beltrame Radu Huculeci Luigi Tavazzi Gerhard Hindricks Jeroen Bax Barbara Casadei Stephan Achenbach F. Lucy Wright Panos Vardas Lezha MIMOZA Goda Artan Demiraj Aurel Mohammed Chettibi Naima Hammoudi Hamayak Sisakian Sergey Pepoyan Bernhard Metzler Peter Siostrzonek Franz Weidinger Tofig Jahangirov Farid Aliyev Yasmin Rustamova Nikolay Manak Aliaksandr Mrochak Patrizio Lancellotti Agnès Pasquet Marc Claeyss Zumreta Kušljugić Larisa Dizdarević Hudić Elnur Smajić Mariya Petkova Tokmakova Plamen Marinov Gatzov Davor Milčić Mijo Bergovec Christos Christou Hera Heracleous Moustira Theodoros Christodoulides Ales Linhart Milos Taborsky Henrik Steen Hansen Lene Holmvang Steen Dalby Kristensen Magdy Abdelhamid Khaled Shokry Priit Kampus Margus Viigimaa Essi Ryödi Matti Niemelä Tuomas T Rissanen Jean-Yves Le Heuzey Martine Gilard A Aladashvili A Gamkrelidze Maia Kereselidze A Zeiher H Katus K Bestehorn Costas Tsioufis John Goudevenos Zoltán Csanádi Dávid Becker Kálmán Tóth Pórdís Jóna Hrafnkelsdóttir James Crowley Peter Kearney Barbra Dalton Doron Zahger Arik Wolak Domenico Gabrielli Ciro Indolfi Stefano Urbinati Gulnara Imantayeva Salim Berkinbayev Gani Bajraktari Artan Ahmeti Gezim Berisha Mirrahimov Erkin Abilova Saamay Andrejs Erglis Iveta Bajare Sanda Jegere Malek Mohammed Antoine Sarkis Georges Saadeh Ruta Zvirblyte Gintare Sakalyte Rimvydas Slapikas Khaled Ellafi Fathi El Ghamari Cristiana Banu Jean Beissel Tiziana Felice Sandra C Buttigieg Robert G Xuereb Mihail Popovici Aneta Boskovic Miroslav Rabrenovic Samir Zlot Saadia Abir-Khalil A C Van Rossum B J M Mulder M W Elsendoorn Elizabeta Srbinovska-Kostovska Jorgo Kostov Bosevski Marjan Terje Steigen Ole Christian Mjølstad Piotr Ponikowski Adam Witkowski Piotr Jankowski Victor Machado Gil Jorge Mimoso Sérgio Baptista Dragos Vinereanu Ovidiu Chioncel Bogdan A Popescu Evgeny Shlyakhto Raphael Oganov Marina Foscoli Marco Zavatta Ana Djordjevic Dikic Branko Beleslin Mina Radosavljevic Radovanovic Peter Hlivák Robert Hatala Gabriela Kaliská Miran Kenda Zlatko Frasn Manuel Anguita Ángel Cequier Javier Muñoz Stefan James Bengt Johansson Pyotr Platonov Michael Johannes Zellweger Giovanni B Pedrazzini David Carballo Hussam Eddin Shebli Samer Kabbani Leila Abid Fouzi Addad Engin Bozkurt Meral Kayıkcioglu Mustafa Kemal Erol Volodymyr Kovalenko Elena Nesukay Andrew Wragg Peter Ludman Simon Ray Ravshanbek Kurbanov Dennis Boateng Ghislain Daval Victor De Benito Rubio David Sebastiao Paola Thellung De Courtelary Isabel Bardinet European Society Of Cardiology European Society of Cardiology: Cardiovascular Disease Statistics 2019. *European Heart Journal* **2019**, *41*, 12–85, 10.1093/eurheartj/ehz859.
- Francois Mach; Colin Baigent; Alberico L. Catapano; Konstantinos C Koskinas; Manuela Casula; Lina Badimon; M John Chapman; Guy G De Backer; Victoria Delgado; Brian A Ference; et al. Ian M Graham Alison Halliday Ulf Landmesser Borislava Mihaylova Terje R Pedersen Gabriele Riccardi Dimitrios J Richter Marc S Sabatine Marja-Riitta Taskinen Lale Tokgozoglu Olov Wiklund Christian Mueller Heinz Drexler Victor Aboyans Alberto Corsini Wolfram Doehner Michel Farnier Bruna Gigante Meral Kayıkcioglu Goran Krstacic Ekaterini Lambrinou Basil S Lewis Josep Masip Philippe Moulin Steffen Petersen Anna Sonia Petronio Massimo Francesco Piepoli Xavier Pintó Lorenz Råber Kausik K Ray Željko Reiner Walter F Riesen Marco Roffi Jean-Paul Schmid Evgeny Shlyakhtolain A Simpson Erik Stroes Isabella Sudano Alexandros D Tselepis Margus Viigimaa Cecile Vindis Alexander Vonbank Michal Vrablik Mislav Vrsalovic José Luis Zamorano Jean-Philippe Collet Stephan Windecker Veronica Dean Donna Fitzsimons Chris P Gale Diederick Grobbee Sigrun Halvorsen Gerhard Hindricks Bernard Jung Peter Jüni Hugo A Katus Christophe Leclercq Maddalena Lettino Bela Merkely Miguel Sousa-Uva Rhian M Touyz Djamaledine Nibouche Parounak H Zelveian Peter Siostrzonek Ruslan Najafov Philippe Van De Borne Belma Pojskic Arman Postadzhiyan Lambros Kypris Jindřich Špinar Mogens Lytken Larsen Hesham Salah Eldin Timo E Strandberg Jean Ferrières Rusudan Agladze Ulrich Laufs Loukianos Rallidis László Bajnok Thorbjörn Gudjónsson Vincent Maher Yaakov Henkin Michele Massimo Gulizia Aisulu Mussagaliyeva Gani Bajraktari Alina Kerimkulova Gustavs Latkovskis Omar Hamoui Rimvydas Slapikas Laurent Visser Philip Dingli Victoria Ivanov Aneta Boskovic Mbarek Nazzi Frank Visseren Irena Mitevska Kjetil Retterstøl Piotr Jankowski Ricardo Fontes-Carvalho Dan Gaita Marat Ezhov Marina Foscoli Vojislav Giga Daniel Pella Zlatko Frasn Leopoldo Perez De Isla Emil Hagström Roger Lehmann Leila Abid Oner Ozdogan Olena Mitchenko Riyaz S Patel Esc Scientific Document Group 2019 ESC/EAS Guidelines for the management of dyslipidaemias: lipid modification to reduce cardiovascular risk. *European Heart Journal* **2019**, *41*, 111–188, 10.1093/eurheartj/ehz455.
- Nick Townsend; Lauren Wilson; Prachi Bhatnagar; Kremlin Wickramasinghe; Mike Rayner; Melanie Nichols; Cardiovascular disease in Europe: epidemiological update 2016. *European Heart Journal* **2016**, *37*, 3232–3245, 10.1093/eurheartj/ehw334.
- Wilkins E, Wilson L, Wickramasinghe K, Bhatnagar P, Leal J, Luengo-Fernandez R, Burns R, Rayner M, Townsend N (2017). European Cardiovascular Disease Statistics 2017. European Heart Network, Brussels.
- The cost of CVD . Champion Advocates Programme. Retrieved 2020-8-7
- Syed Saad Mahmood; Daniel Levy; Ramachandran S. Vasan; Thomas J. Wang; The Framingham Heart Study and the epidemiology of cardiovascular disease: a historical perspective.. *The Lancet* **2013**, *383*, 999–1008, 10.1016/S0140-6736(13)61752-3.
- S. Yusuf; S. Hawken; S. Ounpuu; Effect of potentially modifiable risk factors associated with myocardial infarction in 52 countries (the INTERHEART study): Case-control study. *ACC Current Journal Review* **2004**, *13*, 15–16, 10.1016/j.accreview.2004.11.072.
- NCDs | Know the NCD targets . World Health Organization. Retrieved 2020-8-7
- Kristy Breuhl Smith; Michael Seth Smith; Obesity Statistics. *Primary Care: Clinics in Office Practice* **2016**, *43*, 121–135, 10.1016/j.pop.2015.10.001.
- Jana Krzysztoszek; Ida Laudańska-Krzemińska; Michal Bronikowski; Assessment of epidemiological obesity among adults in EU countries.. *Annals of Agricultural and Environmental Medicine* **2018**, *26*, 341–349, 10.26444/aaem/97226.
- Anna Maria Rychter; Alicja Ewa Ratajczak; Agnieszka Zawada; Agnieszka Dobrowolska; Iwona Krela-Kaźmierczak; Non-Systematic Review of Diet and Nutritional Risk Factors of Cardiovascular Disease in Obesity. *Nutrients* **2020**, *12*, 814, 10.3390/nu12030814.
- Robert W Caldwell; Mechanisms of obesity-induced metabolic and vascular dysfunctions. *Frontiers in Bioscience* **2019**, *24*, 890–934, 10.2741/4758.
- Chrysi Koliaki; Stavros Liatis; Alexander Kokkinos; Obesity and cardiovascular disease: revisiting an old relationship. *Metabolism* **2019**, *92*, 98–107, 10.1016/j.metabol.2018.10.011.
- Emanuele Di Angelantonio; Shilpa N Bhupathiraju; David Wormser; Pei Gao; Stephen Kaptoge; Amy Berrington De Gonzalez; Benjamin J. Cairns; Rachel Huxley; Chandra L Jackson; Grace Joshy; et al. Sarah Lewington Joann Manson Neil Murphy Alpa V Patel Jonathan M Samet Mark Woodward Wei Zheng Maigen Zhou Narinder Bansal Aurelio Baricarte Brian Carter James R. Cerhan George Davey Smith Xianghua Fang Oscar H. Franco Jane Green Jim Halsey Janet S Hildebrand Keum Ji Jung Rosemary Korda Dale F McLerran Steven C. Moore Linda Marie O'keeffe Ellie Paige Anna Ramond Gillian K



- ReevesBetsy RollandCarlotta SacerdoteNaveed SattarEleni SofianopoulouJune StevensMichael ThunHirotsugu UeshimaLing YangYoung Duk YunPeter WilleitEmily BanksValerie BeralZhengming ChenSusan M GapsturMarc J GunterPatricia HartgeSun Ha JeeTai Hing LamRichard PetoJohn D. PotterWalter C WillettSimon G ThompsonJohn DaneshFrank B HuJoann E MansonRory Collins Body-mass index and all-cause mortality: individual-participant-data meta-analysis of 239 prospective studies in four continents.. *The Lancet* **2016**, *388*, 776-86, 10.1016/S0140-6736(16)30175-1.
15. Paul Poirier; Thomas D. Giles; George A. Bray; Yuling Hong; Judith S. Stern; F. Xavier Pi-Sunyer; Robert H Eckel; Obesity and Cardiovascular Disease: Pathophysiology, Evaluation, and Effect of Weight Loss. *Circulation* **2006**, *113*, 898-918, 10.1161/circulationaha.106.171016.
  16. Paul Poirier; Frcpc; Obesity and Cardiovascular Disease. *Circulation* **2006**, *114*, e564-e564, 10.1161/circulationaha.106.646455.
  17. Eugenia E Calle; Carmen Rodriguez; Kimberly Walker-Thurmond; Michael J. Thun; Overweight, Obesity, and Mortality from Cancer in a Prospectively Studied Cohort of U.S. Adults. *New England Journal of Medicine* **2003**, *348*, 1625-1638, 10.1056/nejmoa021423.
  18. José J. Fuster; Noriyuki Ouchi; Noyan Gokce; K. Walsh; Obesity-Induced Changes in Adipose Tissue Microenvironment and Their Impact on Cardiovascular Disease.. *Circulation Research* **2016**, *118*, 1786-807, 10.1161/CIRCRESAHA.115.306885.
  19. Yang Xiao; Aimin Xu; Xiaoyan Hui; Pengcheng Zhou; Xing Li; Hui Zhong; Weili Tang; Gan Huang; Zhiguang Zhou; Circulating Lipocalin-2 and Retinol-Binding Protein 4 Are Associated with Intima-Media Thickness and Subclinical Atherosclerosis in Patients with Type 2 Diabetes. *PLOS ONE* **2013**, *8*, e66607, 10.1371/journal.pone.0066607.
  20. Harman S Mattu; Harpal S Randeva; Role of adipokines in cardiovascular disease. *Journal of Endocrinology* **2012**, *216*, T17-T36, 10.1530/joe-12-0232.
  21. Rei Shibata; Noriyuki Ouchi; Koji Ohashi; Toyooki Murohara; The role of adipokines in cardiovascular disease. *Journal of Cardiology* **2017**, *70*, 329-334, 10.1016/j.jjcc.2017.02.006.
  22. Sandrine Morel; Brenda R. Kwak; Françoise Rohner-Jeanrenaud; Sabine Steffens; Filippo Molica; Adipokines at the crossroad between obesity and cardiovascular disease. *Thrombosis and Haemostasis* **2015**, *113*, 553-566, 10.1160/th14-06-0513.
  23. George Ntaios; Nikolaos K. Gatselis; Konstantinos Makaritsis; George Dalekos; Adipokines as mediators of endothelial function and atherosclerosis. *Atherosclerosis* **2013**, *227*, 216-221, 10.1016/j.atherosclerosis.2012.12.029.
  24. Korek, Emilia; Krauss, Hanna; Nowe adipokiny o potencjalnym znaczeniu w patogenezie otyłości i zaburzeń metabolicznych. *Postępy Higieny Medycyny Doświadczalnej* **2015**, *69*, 799-810.
  25. Alison M. Mondul; Kai Yu; William Wheeler; Hong Zhang; Stephanie J. Weinstein; Jacqueline M. Major; Marilyn C. Cornelis; Satu Mannisto; Aditi Hazra; Ann W. Hsing; et al. Kevin B. JacobsHeather EliassenToshiko TanakaDouglas J. RedingSara HendricksonLuigi FerrucciJarmo VirtamoDavid J. HunterStephen J. ChanockPeter KraftDemetrius Albanes Genome-wide association study of circulating retinol levels. *Human Molecular Genetics* **2011**, *20*, 4724-4731, 10.1093/hmg/ddr387.
  26. Majerczyk, Marcin; Olszanecka-Glinianowicz, Magdalena; Puzianowska, Monika; Chudek, Jerzy; Białko wiążące retinol typu 4 (RBP4) jako czynnik i marker uszkodzenia naczyń związany z insulinoopornością. *Postępy Higieny Medycyny Doświadczalnej* **2016**, *70*, 1267-1275.
  27. Ji-Won Lee; Hye-Ree Lee; Jae-Yong Shim; Jee-Aee Im; Duk-Chul Lee; Abdominal Visceral Fat Reduction Is Associated with Favorable Changes of Serum Retinol Binding Protein-4 in Nondiabetic Subjects. *Endocrine Journal* **2008**, *55*, 811-818, 10.1507/endocrj.k08e-030.
  28. A. Cabré; Iolanda Lazaro; Josefa Girona; J. Manzanares; F. Marimón; Núria Plana; M. Heras; L. Masana; Retinol-binding protein 4 as a plasma biomarker of renal dysfunction and cardiovascular disease in type 2 diabetes. *Journal of Internal Medicine* **2007**, *262*, 496-503, 10.1111/j.1365-2796.2007.01849.x.
  29. Yuhao Su; Ying Huang; Ying Jiang; Meilan Zhu; The Association between Serum Retinol-Binding Protein 4 Levels and Cardiovascular Events in Patients with Chronic Kidney Disease.. *Laboratory Medicine* **2020**, *Imz104*, 1-7, 10.1093/labmed/Imz104.
  30. Thomas Bobbert; J Raila; Franziska Schwarz; Knut Mai; Andrea Henze; Andreas F. H. Pfeiffer; F. J. Schweigert; Joachim Spranger; Relation between retinol, retinol-binding protein 4, transthyretin and carotid intima media thickness. *Atherosclerosis* **2010**, *213*, 549-551, 10.1016/j.atherosclerosis.2010.07.063.
  31. Thomas Olsen; Rune Blomhoff; Retinol, Retinoic Acid, and Retinol-Binding Protein 4 are Differentially Associated with Cardiovascular Disease, Type 2 Diabetes, and Obesity: An Overview of Human Studies. *Advances in Nutrition: An International Review Journal* **2019**, *11*, 644-666, 10.1093/advances/nmz131.
  32. Giuliano Generoso; Marcio S. Bittencourt; Vitamin A: An enhanced vision of the relationship between apolipoproteins and cardiovascular risk?. *Atherosclerosis* **2017**, *265*, 256-257, 10.1016/j.atherosclerosis.2017.08.020.
  33. Kohzo Takebayashi; Mariko Suetsugu; Sadao Wakabayashi; Yoshimasa Aso; Toshihiko Inukai; Retinol Binding Protein-4 Levels and Clinical Features of Type 2 Diabetes Patients. *The Journal of Clinical Endocrinology & Metabolism* **2007**, *92*, 2712-2719, 10.1210/jc.2006-1249.
  34. Irina Kowalska; Agnieszka Adamska; Agnieszka Nikolajuk; Monika Karczewska-Kupczewska; Marek Straczkowski; Elżbieta Otziomek; Maria Górská; Serum Retinol Binding Protein 4 Is Related to Insulin Resistance and Nonoxidative Glucose Metabolism in Lean and Obese Women with Normal Glucose Tolerance. *The Journal of Clinical Endocrinology & Metabolism* **2008**, *93*, 2786-2789, 10.1210/jc.2008-0077.
  35. Milagros Rocha; Celia Bañuls; Lorena Bellod; Susana Rovira-Llopis; Carlos Morillas; Eva Solá; Víctor Manuel Víctor; A Hernández-Mijares; Association of Serum Retinol Binding Protein 4 with Atherogenic Dyslipidemia in Morbid Obese Patients. *PLOS ONE* **2013**, *8*, e78670, 10.1371/journal.pone.0078670.
  36. Timothy E. Graham; Qin Yang; Matthias Blüher; Ann Hammarstedt; Theodore P. Ciaraldi; Robert R. Henry; Christopher J. Wason; Andreas Oberbach; Per-Anders Jansson; Ulf Smith; et al. Barbara B. Kahn Retinol-Binding Protein 4 and Insulin Resistance in Lean, Obese, and Diabetic Subjects. *New England Journal of Medicine* **2006**, *354*, 2552-2563, 10.1056/nejmoa054862.
  37. Erik Ingelsson; J Sundström; Håkan Melhus; Karl Michaëlsson; Christian Berne; Ramachandran S. Vasan; Ulf Riserus; Rune Blomhoff; Lars Lind; Johan Ärnlöv; et al. Circulating retinol-binding protein 4, cardiovascular risk factors and prevalent cardiovascular disease in elderly. *Atherosclerosis* **2009**, *206*, 239-244, 10.1016/j.atherosclerosis.2009.02.029.
  38. Anna Solini; Eleonora Santini; Stephanie Madec; Chiara Rossi; Elza Muscelli; Retinol-Binding Protein-4 in Women With Untreated Essential Hypertension. *American Journal of Hypertension* **2009**, *22*, 1001-1006, 10.1038/ajh.2009.116.
  39. T. E. Graham; C. J. Wason; M. Blüher; B. B. Kahn; Shortcomings in methodology complicate measurements of serum retinol binding protein (RBP4) in insulin-resistant human subjects. *Diabetologia* **2007**, *50*, 814-823, 10.1007/s00125-006-0557-0.
  40. Krysten Farjo; Rafal A. Farjo; Stacey Halsey; Gennadiy Moiseyev; Jian-Xing Ma; Retinol-Binding Protein 4 Induces Inflammation in Human Endothelial Cells by an NADPH Oxidase- and Nuclear Factor Kappa B-Dependent and Retinol-Independent Mechanism. *Molecular and Cellular Biology* **2012**, *32*, 5103-5115, 10.1128/MCB.00820-12.
  41. Z-Z Li; X-Z Lu; J-B Liu; L Chen; Serum Retinol-Binding Protein 4 Levels in Patients with Diabetic Retinopathy. *Journal of International Medical Research* **2010**, *38*, 95-99, 10.1177/147323001003800111.
  42. Fateme Zabetian-Targhi; Mohammad J Mahmoudi; Nima Rezaei; Maryam Mahmoudi; Retinol binding protein 4 in relation to diet, inflammation,

- immunity, and cardiovascular diseases.. *Advances in Nutrition: An International Review Journal* **2015**, *6*, 748–62, 10.3945/an.115.008292.
43. Jiahua Fan; Songping Yin; Diaozhu Lin; Yangqing Liu; Nixuan Chen; Xinxiu Bai; Qiuyi Ke; Jia Shen; Lili You; Xiuhong Lin; et al. Feng LiFengyi HeLi YanChaogang ChenMin Xia Association of Serum Retinol-Binding Protein 4 Levels and the Risk of Incident Type 2 Diabetes in Subjects With Prediabetes. *Diabetes Care* **2019**, *42*, 1574–1581, 10.2337/dc19-0265.
  44. Chin-Jung Lin; Nain-Feng Chu; Yi-Jen Hung; Jin-Biou Chang; Chih-Tsueng He; Fone-Ching Hsiao; Chang-Hsun Hsieh; The Association of Retinol-Binding Protein 4 With Metabolic Syndrome and Obesity in Adolescents. *Clinical Pediatrics* **2012**, *52*, 16–23, 10.1177/0009922812459948.
  45. José Manuel Fernández-Real; José Maria Moreno-Navarrete; Wifredo Ricart; Circulating Retinol-Binding Protein-4 Concentration Might Reflect Insulin Resistance—Associated Iron Overload. *Diabetes* **2008**, *57*, 1918–1925, 10.2337/db08-0041.
  46. Rocio Mateo-Gallego; Laura LaCalle; Sofia Pérez-Calahorra; Victoria Marco-Benedí; Valle Recasens; Noelia Padrón; Itziar Lamiquiz-Moneo; Lucía Baila-Rueda; Estibaliz Jarauta; Pilar Calmarza; et al. Ana CenarroPilar De Miguel-Etayo Efficacy of repeated phlebotomies in hypertriglyceridemia and iron overload: A prospective, randomized, controlled trial. *Journal of Clinical Lipidology* **2018**, *12*, 1190–1198, 10.1016/j.jacl.2018.06.017.
  47. Chiyang An; Han Wang; Xiaomin Liu; Yanbo Li; Ying Su; Xinyuan Gao; Wai Jiang; Serum retinol-binding protein 4 is elevated and positively associated with insulin resistance in postmenopausal women.. *Endocrine Journal* **2009**, *56*, 987–996, 10.1507/endocrj.k09e-096.
  48. Shangyong Feng; Yan Zhu; Caifeng Yan; Yan Wang; Zhenwen Zhang; Retinol binding protein 4 correlates with and is an early predictor of carotid atherosclerosis in type 2 diabetes mellitus patients. *The Journal of Biomedical Research* **2015**, *29*, 451–455, 10.7555/jbr.29.20140087.
  49. Jong Chul Won; Cheol-Young Park; Sang Woo Oh; Sung Woo Park; Increased plasma levels of retinol-binding protein 4 with visceral obesity is associated with cardiovascular risk factors. *Journal of Diabetes Investigation* **2012**, *3*, 457–463, 10.1111/j.2040-1124.2012.00213.x.
  50. Masoume Mansouri; Ramin Heshmat; Ozra Tabatabaei-Malazy; Farshad Sharifi; Zohre Badamchizadeh; Sudabeh Alatab; K. Omidfar; Hossein Fakhrzadeh; Bagher Larjani; The association of carotid intima media thickness with retinol binding protein-4 and total and high molecular weight adiponectin in type 2 diabetic patients. *Journal of Diabetes & Metabolic Disorders* **2012**, *11*, 2–2, 10.1186/2251-6581-11-2.
  51. Chih-Hsun Chu; Hing-Chung Lam; Jenn-Kuen Lee; Chih-Chen Lu; Chun-Chin Sun; Hsin-Ju Cheng; Mei-Chun Wang; Ming-Ju Chuang; Elevated serum retinol-binding protein 4 concentrations are associated with chronic kidney disease but not with the higher carotid intima-media thickness in type 2 diabetic subjects.. *Endocrine Journal* **2011**, *58*, 841–847, 10.1507/endocrj.ej11-0028.
  52. Xiu-Zhen Li; Kang-Zhen Zhang; Jian-Jun Yan; Li Wang; Yue Wang; Xi-Yu Shen; Hui-Xian Sun; Li Liu; Can Zhao; Hui-Wei He; et al. Lian-Sheng WangWei GaoXiang Lu Serum retinol-binding protein 4 as a predictor of cardiovascular events in elderly patients with chronic heart failure. *ESC Heart Failure* **2020**, *7*, 542–550, 10.1002/ehf2.12591.
  53. Christine Bachmayer; Anne Kemmer; Nadine Ehrmann; Till Hasenberg; Alexander Lammert; Hans-Peter Hammes; Adipokines and endothelial dysfunction in obesity WHO° III. *Microvascular Research* **2013**, *89*, 129–133, 10.1016/j.mvr.2013.04.007.
  54. Pilar Codoñer-Franch; Joaquin Carrasco-Luna; Paula Allepuz; Alan Codoñer-Alejos; Vicent Guillem; Association of RBP4 genetic variants with childhood obesity and cardiovascular risk factors. *Pediatric Diabetes* **2015**, *17*, 576–583, 10.1111/pedi.12339.
  55. Mansour Shajarian; Laleh Rafiee; Hajar Naji-Esfahani; Shaghayegh Haghighi Javanmard; Sarrafzadegan Nizal; Association of RBP4 gene variants with adverse lipid profile and obesity. *Gene* **2015**, *561*, 1–5, 10.1016/j.gene.2014.12.071.
  56. RavindraNath Duggirala; John Blangero; Laura Almasy; Thomas D. Dyer; Kenneth L. Williams; Robin J. Leach; Peter O'connell; Michael P. Stern; Linkage of Type 2 Diabetes Mellitus and of Age at Onset to a Genetic Location on Chromosome 10q in Mexican Americans. *The American Journal of Human Genetics* **1999**, *64*, 1127–1140, 10.1086/302316.
  57. James B. Meigs; Carolien I. M. Panhuysen; Richard H. Myers; Peter W.F. Wilson; L. Adrienne Cupples; A Genome-Wide Scan for Loci Linked to Plasma Levels of Glucose and HbA1c in a Community-Based Sample of Caucasian Pedigrees: The Framingham Offspring Study. *Diabetes* **2002**, *51*, 833–840, 10.2337/diabetes.51.3.833.
  58. Jennifer L. Shea; Guang Sun; J. Concepción Loredó-Ostí; Association of RBP4 Gene Variants and Serum HDL Cholesterol Levels in the Newfoundland Population. *Obesity* **2009**, *18*, 1393–1397, 10.1038/oby.2009.398.
  59. Peter Kovacs; Michaela Geyer; Janin Berndt; Nora Klötting; Timothy E. Graham; Yvonne Böttcher; Beate Enigk; Anke Tönjes; Rit Schleinitz; Michael P. Schön; et al. Barbara B. KahnMatthias BlüherMichael Stumvoll Effects of Genetic Variation in the Human Retinol Binding Protein-4 Gene (RBP4) on Insulin Resistance and Fat Depot Specific mRNA Expression. *Diabetes* **2007**, *56*, 3095–3100, 10.2337/db06-1647.
  60. Ying Wu; Huaixing Li; Ruth J F Loos; Qibin Qi; Frank B. Hu; Yong Liu; Xu Lin; RBP4 variants are significantly associated with plasma RBP4 levels and hypertriglyceridemia risk in Chinese Hanss. *Journal of Lipid Research* **2009**, *50*, 1479–1486, 10.1194/jlr.P900014-JLR200.
  61. Katie Goodwin; Michal Abrahamowicz; Gabriel Leonard; Michel Perron; Louis Richer; Suzanne Veillette; Daniel Gaudet; Tomas Paus; Zdenka Pausova; Dietary Vitamin A and Visceral Adiposity: A Modulating Role of the Retinol-Binding Protein 4 Gene. *Journal of Nutrigenetics and Nutrigenomics* **2015**, *8*, 164–173, 10.1159/000442090.
  62. Ke Wan; Jianxun Zhao; Ying Deng; Xi Chen; Qing Zhang; Zhi Zeng; Li Zhang; Yucheng Chen; A Genetic Polymorphism in RBP4 Is Associated with Coronary Artery Disease. *International Journal of Molecular Sciences* **2014**, *15*, 22309–22319, 10.3390/ijms151222309.
  63. Mathias Fasshauer; Matthias Blüher; Adipokines in health and disease. *Trends in Pharmacological Sciences* **2015**, *36*, 461–470, 10.1016/j.tips.2015.04.014.
  64. Emilia Korek; Magdalena Gibas-Dorna; Zuzanna Chęcińska-Maciejewska; Hanna Krauss; Małgorzata Łagiedo-Żelazowska; Barbara Kołodziejczak; Paweł Bogdański; Serum RBP4 positively correlates with triglyceride level but not with BMI, fat mass and insulin resistance in healthy obese and non-obese individuals. *Biomarkers* **2018**, *23*, 683–688, 10.1080/1354750x.2018.1479770.
  65. Hanna Wessel; Ali Saeed; Janette Heegsma; Margery A. Connelly; Klaas Nico Faber; Robin P F Dullaart; Plasma Levels of Retinol Binding Protein 4 Relate to Large VLDL and Small LDL Particles in Subjects with and without Type 2 Diabetes.. *Journal of Clinical Medicine* **2019**, *8*, 1792, 10.3390/jcm8111792.
  66. Marcin Majerczyk; Piotr Kocelak; P. Choreża; H. Arabzada; Aleksander Jerzy Owczarek; M. Bozentowicz-Wikarek; Anna Brzozowska; A. Szybalska; Monika Puzianowska-Kuznicka; Tomasz Grodzicki; et al. A. WięcekMagdalena Olszanecka-GlinianowiczJerzy Chudek Components of metabolic syndrome in relation to plasma levels of retinol binding protein 4 (RBP4) in a cohort of people aged 65 years and older. *Journal of Endocrinological Investigation* **2018**, *41*, 1211–1219, 10.1007/s40618-018-0856-6.
  67. Gary Huang; Dan Wang; Unab I. Khan; Irfan Zeb; JoAnn E. Manson; Virginia M. Miller; Howard N. Hodis; Matthew J. Budoff; George R. Merriam; S. Mitchell Harman; et al. Eliot A. BrintonMarcelle I. CedarsYali SuRogerio A LoboFrederick NaftolinNanette SantoroHugh S. TaylorRachel P. Wildman Associations between retinol-binding protein 4 and cardiometabolic risk factors and subclinical atherosclerosis in recently postmenopausal women: cross-sectional analyses from the KEEPS study. *Cardiovascular Diabetology* **2012**, *11*, 52–52, 10.1186/1475-2840-11-52.
  68. C. Bachmayer; Till Hasenberg; H.-P. Hammes; A. Lammert; Healthy Obese and Post Bariatric Patients – Metabolic and Vascular Patterns. *Experimental and Clinical Endocrinology & Diabetes* **2013**, *121*, 483–487, 10.1055/s-0033-1347248.

69. Dominik Georg Haider; Karin Schindler; Gerhard Prager; A. Bohdjalian; Anton Luger; Michael Wolzt; Bernhard Ludvik; Serum Retinol-Binding Protein 4 Is Reduced after Weight Loss in Morbidly Obese Subjects. *The Journal of Clinical Endocrinology & Metabolism* **2007**, *92*, 1168–1171, 10.1210/jc.2006-1839.
70. Alexander Tschoner; Wolfgang Sturm; Julia Engl; Susanne Kaser; Markus Laimer; Elisabeth Laimer; Helmut Weiss; Josef R. Patsch; Christoph F. Ebenbichler; Retinol-binding Protein 4, Visceral Fat, and the Metabolic Syndrome: Effects of Weight Loss. *Obesity* **2008**, *16*, 2439–2444, 10.1038/oby.2008.391.
71. Nora Klöting; Timothy E. Graham; Janin Berndt; Susan Kralisch; Peter Kovacs; Christopher J. Wason; Mathias Fasshauer; Michael P. Schön; Michael Stumvoll; Matthias Blüher; et al. Barbara B. Kahn Serum Retinol-Binding Protein Is More Highly Expressed in Visceral than in Subcutaneous Adipose Tissue and Is a Marker of Intra-abdominal Fat Mass. *Cell Metabolism* **2007**, *6*, 79–87, 10.1016/j.cmet.2007.06.002.
72. Ji-Won Lee; Jee-Aee Im; Hye-Ree Lee; Jae-Yong Shim; Byung-S. Youn; Duk Chul Lee; Visceral Adiposity Is Associated with Serum Retinol Binding Protein-4 Levels in Healthy Women\*. *Obesity* **2007**, *15*, 2225–2232, 10.1038/oby.2007.264.
73. Justin P Zachariah; Rene Quiroz; Kerrie P. Nelson; Zhaoyang Teng; John F. Keaney; Lisa Sullivan; Ramachandran S. Vasan; Prospective Relation of Circulating Adipokines to Incident Metabolic Syndrome: The Framingham Heart Study. *Journal of the American Heart Association* **2017**, *6*, e004974, 10.1161/jaha.116.004974.
74. Vera Karamfilova; Antoaneta Gateva; Asen Alexiev; Nadejda Zheleva; Tsvetelina Velikova; Radina Ivanova-Boyanova; Raya Ivanova; Nikolay Cherkeзов; Zdravko Kamenov; Ludmila Mateva; et al. The association between retinol-binding protein 4 and prediabetes in obese patients with nonalcoholic fatty liver disease.. *Archives of Physiology and Biochemistry* **2019**, *63*, 1–6, 10.1080/13813455.2019.1673429.
75. R G Vink; Nadia J. Roumans; Edwin C. Mariman; Marleen A. Van Baak; Dietary weight loss-induced changes in RBP4, FFA, and ACE predict weight regain in people with overweight and obesity. *Physiological Reports* **2017**, *5*, e13450, 10.14814/phy2.13450.

## Keywords

RBP4; obesity; cardiovascular disease; metabolic syndrome



© 2020 by the author(s). Distribute under a Creative Commons CC BY license