

MDS

Subjects: [Pathology](#)

Contributor: Nicolas Bonadies

Myelodysplastic syndromes (MDS) represent a heterogeneous group of clonal disorders caused by sequential accumulation of somatic driver mutations in hematopoietic stem and progenitor cells (HSPCs). MDS is characterized by ineffective hematopoiesis with cytopenia, dysplasia, inflammation, and a variable risk of transformation into secondary acute myeloid leukemia.

myelodysplastic syndromes

postgenomic era

precision medicine

targeted therapies

future perspectives

1. Epidemiology

MDS is a heterogeneous group of clonal conditions arising from somatic mutations in hematopoietic stem and progenitor cells (HSPCs), mainly affecting elderly individuals ^[1]. Ineffective hematopoiesis in MDS is characterized by a vicious circle of maturation defects (dysplasia), inflammation in the bone marrow (BM) microenvironment and cytopenia in peripheral blood (PB), which is accompanied by variable risk of progressing towards secondary Acute Myeloid Leukemia (sAML) ^[2]. The median age at presentation is above 70 years, with an age-standardized incidence-rate of 3–5 cases per 100,000 patient-years and a prevalence of 20 patients per 100,000 individuals ^[3]. The age-specific incidence-rate increases progressively with age, with 50 cases per 100,000 patient-years in individuals 75 years ^{[3][4]}. Males are predominantly affected, with the exception of MDS with isolated del(5q), which is more frequent in females. Therapy-related MDS is estimated to represent 10% of all MDS cases, though precise incidence rates cannot be determined from current epidemiological data ^{[5][6]}. Although generally a disease of the elderly, MDS can occur at any age. The presence of genetic predisposition syndromes should be thoroughly investigated in childhood or younger adults (40 years). In such cases, multiple organs can be affected, and these individuals carry a risk for increased toxicity to chemotherapy and development of other cancers ^{[7][8]}.

2. General Aspects of MDS Patient Management

The heterogeneity of MDS and the multimorbidity represent major challenges. The disease course may vary from chronic asymptomatic or minimal symptomatic cytopenia to rapid progression towards sAML. Therefore, correct diagnosis, disease- and patient-based risk stratification are essential for an appropriate treatment plan. Experienced physicians, acting within interdisciplinary diagnostic and therapy review boards, should preferentially be involved. Lower-risk MDS patients have a median survival of 3 to 8 years and mostly succumb to non-leukemic causes of death. These include mainly cardiovascular events, infections and other relevant comorbidities, being

aggravated by cytopenia and inflammation. Thus, treatment in lower-risk MDS should improve symptomatic cytopenia and optimize comorbidities aiming to improve quality of life (QoL) and delay progression [9][10]. Higher-risk MDS patients have a median survival of 1 to 3 years and die predominantly of complications related to sAML progression. The treatment aim in these patients is the reduction of progression and improvement of overall survival (OS) with minimal treatment-related toxicities [11][12].

3. Diagnostic Approach and Risk-Stratification

In patients with suspected MDS, previous exposure to genotoxic agents (e.g., cytotoxic chemotherapy, radiation) should be evaluated, which indicates the presence of a therapy related myeloid neoplasm (t-MN). Younger MDS patients (40 years) should be thoroughly screened for germline predispositions, which may be indicated by a family history of malignancies as well as immune or organ dysfunctions in first- and second-degree relatives. The European Leukemia Net recommendation recognizes diagnostic procedures as “mandatory” (evaluation of PB smears and BM aspirate/biopsy with cytogenetic analysis), “recommended” (fluorescence in situ hybridization (FISH) and flow cytometry), and “suggested” in specific circumstances (single-nucleotide-polymorphism (SNP), molecular diagnostics) [13]. Process-based indicators as measurable elements for quality of care are of increasing interest to enable assessment and comparison of the impact of different health care environments on relevant MDS outcomes [14].

4. Therapeutic Approach

Experienced physician and interdisciplinary boards should be involved in the assessment of MDS patient with symptomatic cytopenia or unexplained inflammatory conditions. This is important due to disease complexity, interfering comorbidities, and timely selection of higher-risk MDS patients being eligible for allo-HCT. Fluctuating cytopenias may be the initial manifestation of clonal hematopoiesis. However, patients with uncharacterized systemic autoinflammatory manifestations may also present with SLADMs at high VAFs, as primary manifestation of clonal hematopoiesis or even MDS [15]. New therapeutic options and clinical trials are urgently needed, especially in elderly patients with refractory conditions [16]. Therefore, symptomatic patients should be referred to experienced MDS centers, included in prospective registries/biobanks, and offered participation to clinical trials, whenever possible. The therapeutic approaches for lower- and higher-risk MDS are summarized in **Figure 1A,B**, respectively, and an overview on the treatment landscape can be found in **Figure 2**.

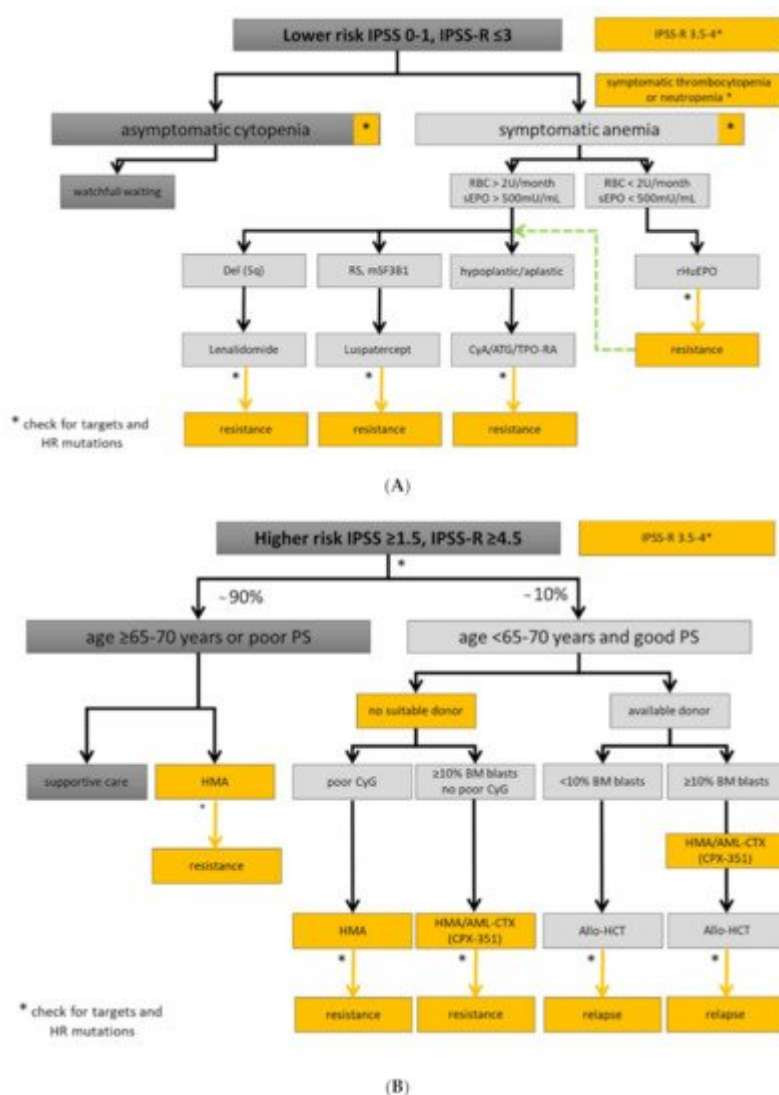


Figure 1. Treatment algorithm for lower- and higher-risk MDS. Yellow boxes highlight areas with an unmet clinical need in in lower (A) and higher-risk MDS (B). High-risk (HR) mutations comprise: ≥ 3 SLADMs or single mutations in *TP53*, *RUNX1*, *ASXL1*, *ETV6*, *EZH2*, *SRSF2*, *U2AF1*, *RAS*-pathway and *JAK2* with VAF $\geq 2\%$ [17][18][19]. Allo-HCT: allogeneic hematopoietic stem cell transplantation; AML-CTX: AML-based chemotherapy; ATG: antithymocyte globulin; BM: bone marrow; CSA: Cyclosporine A; CyG: cytogenetics; ESA: erythropoietin stimulating agent; HMA: hypomethylating agent; HR: high-risk mutations; *mSF3B1*: mutated *SF3B1*; PB: peripheral blood; PS: performance status; RBC: red blood cell concentrate; RS: ring sideroblasts; sEpo: serum erythropoietin; TPO-RA: thrombopoietin receptor agonist. Adapted from [20].

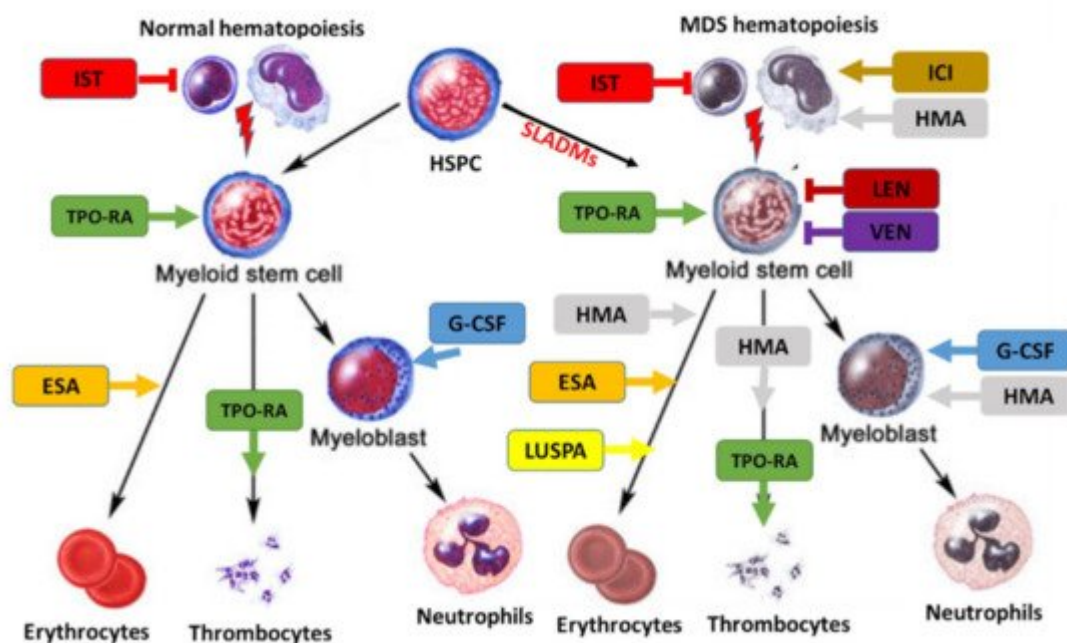


Figure 2. Treatment landscape in MDS. Treatment can affect normal (**left**) and clonal hematopoiesis (**right**). SLADMs: somatic leukemia-associated driver mutations; ESA, erythropoietin stimulating agent; ICI, immune checkpoint inhibitors; G-CSF, granulocyte colony stimulating factor; HMA, hypomethylating agents; IST, immune suppressive treatment (CyA/ATG); LEN, lenalidomide; LUSPA, luspatercept; TPO-RA: thrombopoietin receptor agonists; VEN, venetoclax. Adapted from [20].

References

1. Shastri, A.; Will, B.; Steidl, U.; Verma, A. Stem and progenitor cell alterations in myelodysplastic syndromes. *Blood* 2017, 129, 1586–1594.
2. da Silva-Coelho, P.; Kroeze, L.I.; Yoshida, K.; Koorenhof-Scheele, T.N.; Knops, R.; Van De Locht, L.T.; De Graaf, A.O.; Massop, M.; Sandmann, S.; Dugas, M.; et al. Clonal evolution in myelodysplastic syndromes. *Nat. Commun.* 2017, 8, 15099.
3. Zeidan, A.M.; Shallis, R.M.; Wang, R.; Davidoff, A.; Ma, X. Epidemiology of myelodysplastic syndromes: Why characterizing the beast is a prerequisite to taming it. *Blood Rev.* 2019, 34, 1–15.
4. Bonadies, N.; Feller, A.; Rovo, A.; Ruefer, A.; Blum, S.; Gerber, B.; Stuessi, G.; Benz, R.; Cantoni, N.; Holbro, A.; et al. Trends of classification, incidence, mortality, and survival of MDS patients in Switzerland between 2001 and 2012. *Cancer Epidemiol.* 2017, 46, 85–92.
5. Candelaria, M.; Dueñas-Gonzalez, A. Therapy-related myelodysplastic syndrome. *Expert Opin. Drug Saf.* 2015, 14, 655–665.

6. Abou Zahr, A.; Kavi, A.M.; Mukherjee, S.; Zeidan, A.M. Therapy-related myelodysplastic syndromes, or are they? *Blood Rev.* 2017, 31, 119–128.
7. Locatelli, F.; Strahm, B. How I treat myelodysplastic syndromes of childhood. *Blood* 2018, 131, 1406–1414.
8. Stauder, R.; Yu, G.; Koinig, K.A.; Bagguley, T.; Fenaux, P.; Symeonidis, A.; Sanz, G.; Cermak, J.; Mittelman, M.; Hellström-Lindberg, E.; et al. Health-related quality of life in lower-risk MDS patients compared with age- and sex-matched reference populations: A European LeukemiaNet study. *Leukemia* 2018, 32, 1380–1392.
9. Santini, V. Treatment of low-risk myelodysplastic syndromes. *Hematology* 2016, 2016, 462–469.
10. Fenaux, P.; Ades, L. How we treat lower-risk myelodysplastic syndromes. *Blood* 2013, 121, 4280–4286.
11. Komrokji, R.S. Current state of the art: Management of higher risk myelodysplastic syndromes. *Clin. Lymphoma Myeloma Leuk.* 2016, 16, S39–S43.
12. Garcia-Manero, G. Myelodysplastic syndromes: 2015 Update on diagnosis, risk-stratification and management. *Am. J. Hematol.* 2015, 90, 831–841.
13. Malcovati, L.; Hellström-Lindberg, E.; Bowen, D.; Adès, L.; Cermak, J.; Del Cañizo, C.; Della Porta, M.G.; Fenaux, P.; Gattermann, N.; Germing, U.; et al. Diagnosis and treatment of primary myelodysplastic syndromes in adults: Recommendations from the European LeukemiaNet. *Blood* 2013, 122, 2943–2964.
14. Stojkov, K.; Silzle, T.; Stussi, G.; Schwappach, D.; Bernhard, J.; Bowen, D.; Čermák, J.; Dinmohamed, A.G.; Eeltink, C.; Eggmann, S.; et al. Guideline-based indicators for adult patients with myelodysplastic syndromes. *Blood Adv.* 2020, 4, 4029–4044.
15. Kipfer, B.; Daikeler, T.; Kuchen, S.; Hallal, M.; Andina, N.; Allam, R.; Bonadies, N. Increased cardiovascular comorbidities in patients with myelodysplastic syndromes and chronic myelomonocytic leukemia presenting with systemic inflammatory and autoimmune manifestations. *Semin. Hematol.* 2018, 55, 242–247.
16. Fenaux, P.; Platzbecker, U.; Ades, L. How we manage adults with myelodysplastic syndrome. *Br. J. Haematol.* 2020, 189, 1016–1027.
17. Bejar, R.; Stevenson, K.; Abdel-Wahab, O.; Galili, N.; Nilsson, B.; Garcia-Manero, G.; Kantarjian, H.; Raza, A.; Levine, R.L.; Neuberg, D.; et al. Clinical effect of point mutations in myelodysplastic syndromes. *N. Engl. J. Med.* 2011, 364, 2496–2506.
18. Malcovati, L.; Papaemmanuil, E.; Ambaglio, I.; Elena, C.; Gallì, A.; Della Porta, M.G.; Travaglino, E.; Pietra, D.; Pascutto, C.; Ubezio, M.; et al. Driver somatic mutations identify distinct disease entities within myeloid neoplasms with myelodysplasia. *Blood* 2014, 124, 1513–1521.

19. Bejar, R.; Stevenson, K.E.; Caughey, B.; Lindsley, C.; Mar, B.; Stojanov, P.; Getz, G.; Steensma, D.P.; Ritz, J.; Soiffer, R.; et al. Somatic mutations predict poor outcome in patients with myelodysplastic syndrome after hematopoietic stem-cell transplantation. *J. Clin. Oncol.* 2014, 32, 2691–2698.
20. Chantias, I.; Bonadies, N. Current Standard of Care in Patients with Myelodysplastic Syndromes and Future Perspectives. *Heal. Online Med. J.* 2020, 10–22.

Retrieved from <https://encyclopedia.pub/entry/history/show/33758>