

Conventional Therapies in Colorectal Cancer

Subjects: Oncology

Contributor: Erta Kalanxhi

Biological heterogeneity and low inherent immunogenicity are two features that greatly impact therapeutic management and outcome in colorectal cancer. Despite high local control rates, systemic tumor dissemination remains the main cause of treatment failure and stresses the need for new developments in combined-modality approaches. In this context, cytotoxic agents such as radiation and certain chemotherapeutics can be utilized to enhance the immunogenicity of an otherwise immunologically silent disease and enable responsiveness to immune therapy.

Here, we explore the immunological characteristics of colorectal cancer, the effects that standard-of-care treatments have on the immune system, and the opportunities arising from combining immune checkpoint-blocking therapy with immune-modulating conventional treatments.

Keywords: colorectal cancer ; high-risk ; metastasis ; oxaliplatin ; radiation ; immune checkpoint blockade ; conventional treatment

1. Introduction

Colorectal cancer (CRC) is the third-most commonly diagnosed cancer worldwide with 1.4 million new cases annually ^[1], contributing to the fourth-most common cancer-related deaths ^[2]. Age is considered to be the strongest risk factor with the majority of cases being diagnosed in those aged over 50, and with a significant rise in incidence from the age of 60. CRC is more prevalent in developed, Western countries where the average lifetime risk of 3–5% rises significantly in individuals with a family history of CRC ^[2].

Even though the majority of CRC cases are of a sporadic nature, a subgroup of patients presents with hereditary forms of CRC, such as the common manifestation of Lynch syndrome or the rare familial adenomatous polyposis. In individuals with the former, inherited mutations or epigenetic inactivations of DNA mismatch-repair (MMR) genes result in a deficient MMR (dMMR) function. For those developing CRC, MMR deficiency usually causes a high tumor mutational burden or microsatellite-instable (MSI) status ^[3]. Apart from Lynch syndrome, sporadic cases of early-stage dMMR tumors contribute to a total population of approximately 15% of CRC cases and are associated with better long-term outcomes than those with proficient MMR (pMMR) function ^[4].

A quarter of all CRC patients present with metastatic disease at the time of diagnosis, whereas approximately half of the total patient population will eventually have developed metastases. The most frequently affected distant organ is the liver, followed by the lungs and peritoneum ^[5]. The prevailing theory of metastatic progression in cancer is the classic seed-and-soil concept, and CRC liver metastasis (CLM) is perfectly explained by this theory as the mesenteric venous drainage filters directly to the liver. Regarding primary tumors of the lower rectum, the inferior rectal vein communicates to the inferior vena cava, making these tumors more prone to metastasize to the lungs ^{[6][7]}.

Generally, no curative treatment exists for multi-organ metastasis. In the past two decades, a number of new systemic therapies of cytotoxic and biologically targeted agents have been taken into routine use for advanced CRC, extending patients' lives and most importantly, alleviating their symptoms. Nevertheless, unresectable metastases, particularly in abdominal cavity organs, remain the cause of severe morbidity and poor survival ^[8]. New insights into the underlying biology of systemic tumor dissemination may guide the next milestone in CRC management, the control of metastatic progression.

Within this frame of reference, the potential of using the immune system to fight progressing cancer has opened paradigm-changing therapeutic avenues. Tumor-defeating immunity involves both tumor-antigen recognition and the action of cytotoxic T-lymphocytes. However, as the tumor is also "self", protective mechanisms against auto-immunity impede immune surveillance. This counterbalance between the cancer and the immune system creates a state of equilibrium, or immune tolerance, which can be edited therapeutically. Therefore, immune therapies are aimed at overcoming tumor-induced immune-suppressive mechanisms and invoking antitumor immune responses. So far, this

concept has proven successful in the treatment of a limited number of immunogenic tumors, but for less immunogenic cancers such as the majority of CRC cases, additional stimulation is required to breach the immune tolerance and for patients to achieve beneficial and durable treatment responses.

2. The Tumor Microenvironment (TME)

2.1. The Hypoxic TME and Its Immune Attributes

Hypoxia (low tumor oxygenation), a major TME (tumor microenvironment) hallmark, continuously selects for tumor cell clones with aggressive phenotypes and stimulates epithelial-to-mesenchymal transition, a process during which tumor cells lose the ability to adhere to each other in favor of increased migration within the extracellular matrix [9]. Hypoxic conditions promote resistance to cytotoxic therapies and contribute to metastatic progression [10][11][12]. Furthermore, inflammation in the hypoxic TME provokes immune tolerance via tumor- and T-cell expression of immune checkpoint proteins [13][14]. For example, increased expression of programmed death receptor 1 (PD-1) ligand, PD-L1, in tumor cells renders them more effective in binding to PD-1 on cytotoxic T-cells, thereby silencing T-cell activity. On the other hand, immune checkpoint-blocking antibodies such as anti-PD-1 and anti-PD-L1 agents, approved for treatment of immunogenic tumors such as melanoma, classic Hodgkin lymphoma, and others, act by unleashing the cytotoxic T-cell activity because they deblock the inhibitory binding of the PD-L1 on tumor cells to the PD-1 immune checkpoint T-cell receptors. Thus, this phenomenon is commonly referred to as immune checkpoint blockade (ICB).

Studies have demonstrated major responses and long-term survival to ICB in early-stage, locally advanced, and metastatic dMMR CRC, characterized by high tumor mutational burden and positive MSI status and therefore high densities of tumor-associated antigens [15][16][17][18][19]. Additionally, strong ICB responsiveness has been observed in advanced CRC with a rare gene locus copy-number gain that causes enhanced PD-L1-mediated immune checkpoint activity [20]. However, unlike the case for melanoma and non-small-cell lung cancer, tumor-cell expression of PD-L1 has not shown utility as a predictive biomarker for ICB response in CRC [21][22][23]. Because the efficient activation of tumor-defeating T-cells requires their neo-antigen priming by antigen-presenting dendritic cells, the dominant population of CRC patients with pMMR disease and low tumor mutational burden is inherently non-immunogenic [24][25]. In theory, either the eradication of TME hypoxia or the enhanced release of tumor-associated antigens may breach the immune tolerance, a notion supported by recent findings [26] where CRC patients with poor prognosis in any disease stage had tumors that were concurrently hypoxic and sparse in stromal T-cells and displayed an epithelial-to-mesenchymal transition molecular signature [27].

2.2. Molecular CRC Subtypes

The heterogeneous nature of CRC at the molecular and clinical level has warranted a more comprehensive method of classification that combines molecular signatures of tumor cells with TME features (immune cells and other stromal components) [24]. The consensus molecular subtype (CMS) classification, which is the one most commonly used, is based upon data from six different classification systems and categorizes CRC primary tumors into four different subtypes (CMS1-4) with varying degrees of mutations, immune-cell infiltration, metabolic activations, and other TME changes [28]. For example, CMS1, also referred to as the Immune Subtype, applies to 14% of cases and includes hypermutated tumors with a high degree of immune-cell infiltration and strong immune activation. CMS4, also referred to as the Mesenchymal Subtype, is characterized by upregulation of genes involved in the epithelial-to-mesenchymal transition, angiogenesis, and matrix remodeling. The CMS classification has been validated in preclinical models and holds promise with respect to clinical utility [22][23].

2.3. The CRC Immunoscore

It has been over a decade since Galon and colleagues elegantly demonstrated that the tumor's immune-cell contexture, as assessed in large cohorts of CRC patients with early-stage disease, was better at predicting patient survival than well-established histopathological methods [29]. This contexture, which describes the type, density, and location of adaptive immune cells in the TME, varies greatly between individual patients [30]. Specifically investigated in localized CRC, both tumor infiltration of cytotoxic T-cells and molecular T-cell signatures were correlated with the absence of histological signs of invasiveness and good clinical outcome [31]. This work was further expanded to show that the Immunoscore, a quantification of cytotoxic T-cells in the tumor core and invasive margin, exceeded the capability of positive MSI status and was independent at predicting disease-free survival in patients undergoing primary tumor resection [32][33]. Finally, an international consortium consisting of 14 centers in 13 countries assessed samples from more than 2600 patients with localized colon cancer by standardized protocols for immunohistochemistry and digital image analysis, and validated that the Immunoscore was independent of factors such as age, sex, TN-stage, and MSI status at predicting disease-free

survival [34]. The prognostic power of the Immunoscore was recently confirmed within a prospective adjuvant chemotherapy study [35]. Furthermore, it has been approved as an in vitro diagnostic device in clinical practice but at present without reimbursement by the public health services [36].

However, it has been argued that the Immunoscore fails to include other immune-cell populations hosted by the TME such as macrophages, dendritic cells, and natural killer cells, all of which may also be important for predicting prognosis [37]. These cell types have been studied extensively in predominantly early-stage CRC, where high infiltration within the tumor, and peripherally in the case of dendritic cells, is associated with favorable prognosis [38][39][40]. Paradoxically, this is also true for regulatory T-cells, which are central in the maintenance of immune tolerance [41]; however, this may be due to an alternative T-regulatory population that participates in immune surveillance [42]. To date, the Immunoscore and CMS classification have not been integrated nor evaluated head-to-head with regard to clinical utility by the respective developers. In T1 CRC (the most superficially invasive tumors with excellent prognosis and consequently few CMS4 cases), no significant association was found between the Immunoscore and CMS subtypes [43].

3. Immune Modulation by Cytotoxic Therapies

3.1. Fluoropyrimidines

This class of agents constitutes the mainstay of most CRC treatment regimens. Their mechanism of action relies on disruption of DNA synthesis by the incorporation into DNA and RNA structures and by inhibition of the DNA synthesis enzyme thymidylate synthase [44]. The most commonly used fluoropyrimidine over the years is fluorouracil, which is usually given with folinic acid to increase its affinity for thymidylate synthase. With respect to its immune-related effects, fluorouracil is shown to have an ambivalent role through its selective targeting of myeloid-derived suppressor cells (MDSC), an innate immune-cell population. By targeting MDSC, fluorouracil lifts some of the inhibition that MDSC impose on T-cell activation, but at the same time, the activation of the inflammasome complex in the dying MDSC leads to the release of pro-inflammatory cytokines that ultimately promote angiogenesis and tumor growth [45][46]. Additionally, an in vitro study showed that fluorouracil increased PD-L1 expression in CRC cell lines [47].

3.2. Oxaliplatin

This agent is a third-generation platinum analog. The mechanism behind its cytotoxicity relies on the adduct formation with DNA, resulting in the blocking of DNA replication and transcription. Reduction of thymidylate synthase synthesis is considered as a secondary effect of oxaliplatin that contributes to the synergy observed when oxaliplatin is combined with fluorouracil [48].

Oxaliplatin perfectly illustrates the interplay between cytotoxic and immune-modulating effects of chemotherapy, the latter in terms of immunogenic cell death (ICD) [49][50] (Figure 1). In the dying tumor cell, ICD is preceded by the translocation of calreticulin, an endoplasmic reticulum stress response protein, to the plasma membrane and the extracellular release of ATP and the high-mobility group box-1 (HMGB1) protein. Calreticulin serves as an “eat me” signal, ATP recruits dendritic cells to the tumor sites to cause their maturation to antigen-presenting cells, and HMGB1 facilitates the Toll-like receptor 4 dependent cross-presentation of the released tumor antigens to cytotoxic T-cells.

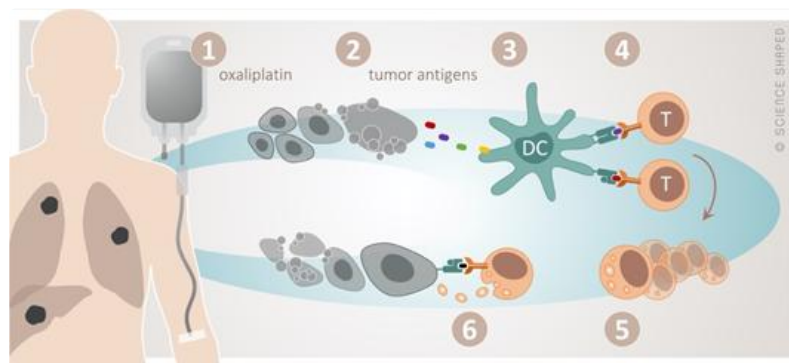


Figure 1. The concept of immunogenic cell death by oxaliplatin. Cytotoxic damage by oxaliplatin (1) causes release of tumor antigens from the dying tumor (2). These are taken up (3) by dendritic cells (DC) and presented to cytotoxic T-cells (4), resulting in their activation and clonal proliferation (5). This will in principle enable specific T-cell-targeting of any tumor manifestation systemically (6).

The ability of oxaliplatin to initiate ICD may play a critical role with respect to its rational combination with ICB therapy. Preclinical studies demonstrated that oxaliplatin provoked TME infiltration of cytotoxic T-cells and sensitization of CRC and other adenocarcinomas to ICB therapy [51][52][53]. Another study using a CLM model showed that oxaliplatin (in cooperation with interleukin-12) reduced the TME content of immune-suppressive T-regulatory cells and MDSC independently of HMGB1 and calreticulin release [54].

Another platinum analog, cisplatin, was unable to sensitize CRC models to ICB therapy [51]. Interestingly, both oxaliplatin and cisplatin induced the release of HMGB1, but it was only oxaliplatin that caused calreticulin translocation and effectively contributed towards tumor immunogenicity [55]. Moreover, HMGB1 binding to Toll-like receptor 4 seemed to be critical for the oxaliplatin efficacy, since patients carrying a loss-of-function TLR4 allele had impaired progression-free survival (PFS) when given oxaliplatin for metastatic disease [55].

3.3. Radiation

Approximately 50% of cancer patients receive radiotherapy during the disease course [56]. Ionizing radiation is cytotoxic in the sense that DNA damage in the targeted cells causes senescence or cell death by means of apoptosis, necrosis, autophagy, or mitotic catastrophe [57]. In addition to the release of tumor-associated antigens, radiation also provokes the release of calreticulin and ATP, leading to the recruitment and activation of dendritic cells. As such, radiation can be viewed as an in situ vaccine with the potential to induce tumor regression systemically [58]. Systemic effects of radiation, away from the radiotherapy target volume, constitute the phenomenon known as abscopal effect. Even though abscopal events are rare, they have been observed both in experimental and clinical settings [59]. The clinical manifestation of the abscopal effect occurs when radiotherapy has been administered together with factors that enhance the antitumor immune response, such as the dendritic-cell stimulator granulocyte-macrophage colony-stimulating factor or ICB therapies [59][60][61][62][63][64][65]. The majority of studies combining radiation with ICB therapy have utilized single-site irradiation, a setting that has been recently proposed to be partially responsible for low response rates. The heterogeneity of tumor-associated antigens in the metastatic lesions and the varying degrees of immunogenicity generated by different organs may warrant irradiation at different sites in order to achieve an adequate immune response [66][67].

However, not all radiation effects are in favor of the antitumor response, and radiation has been shown to also enhance TME immune-suppressive features in experimental models. For example, dendritic cells co-cultured with irradiated murine mammary carcinoma cells had significantly reduced surface expression of both antigen-presenting and co-stimulatory markers [68]. Transforming growth factor- β 1, one of the major immune-suppressive factors induced by radiation, contributes to inhibition of T-cell cytotoxicity [69], immune evasion [70], expansion of T-regulatory cells [71], inhibition of dendritic cell activation, as well as to the induction of pro-tumorigenic phenotypes in both tumor-associated neutrophil and macrophage populations [72][73]. This complex role of radiation in immune responses emphasizes the necessity for combination treatments aimed at enhancing the synergy among the various modalities. Preclinically, radiation has been shown to enhance pro-immunogenic responses for both ICD-inducing chemotherapeutic agents and immune checkpoint inhibitors [74][75]. Importantly, radiation dose and fractionation are determinative for suppressive or activating effects; therefore, dose and sequence of delivery, especially in conjunction with other modalities, should be considered [76]. For example, in a mammary carcinoma mouse model, irradiation with high doses induced a DNA exonuclease, which through degradation of immunogenic DNA fragments accumulating in the cytosol in irradiated cells caused a decline in the recruitment of dendritic cells crucial for T-cell-mediated systemic tumor rejection. However, lower dose fractions did not result in the exonuclease induction [77].

4. Immune-Modulating Opportunities in the Standard-of-Care

4.1. Cytotoxicity and Tumor-Defeating Immunity

In principle, three scenarios can be set for “on-target” cytotoxicity combined with “off-target” tumor-targeting immune responses in the standard-of-care CRC management. They are: neoadjuvant treatment of locally advanced disease in order to impede metastatic progression, neoadjuvant treatment of oligometastatic disease in order to achieve systemic tumor clearance, and early-line therapy in unresectable metastatic disease for durable systemic control.

4.2. Neoadjuvant Treatment of Locally Advanced Disease

In locally advanced rectal cancer (LARC), neoadjuvant chemoradiotherapy (CRT) with a fluoropyrimidine in a non-cytotoxic radiosensitizing dose and resection of the residual tumor result in low local recurrence rates [78], but metastatic progression remains a dominant cause of failure [79][80]. While there is no consensus whether postoperative systemic therapy may reduce metastatic risk [81][82][83], various regimens involving neoadjuvant chemotherapy (NACT) prior to or

immediately following radiation have been investigated. Specifically, oxaliplatin-/fluoropyrimidine-based NACT has been administered before CRT (in trials not randomized for the induction therapy) or following short-course radiation prior to surgery (the experimental arm of the RAPIDO trial) with the aim of delivering adequate systemic therapy for metastasis prevention without compromising local disease control [84][85][86][87][88][89][90][91][92]. Because radiation has the ability to deliver cytotoxic effects in a focused tumor volume, it has been argued that improved systemic outcome may be achieved by intensifying the local effects that enhance elimination of clonogenic cells [93]. In that regard, only two of seven randomized studies that have evaluated the potentially radiosensitizing effect of concomitant oxaliplatin in fluoropyrimidine-based CRT met the primary efficacy endpoint [94][95][96][97][98][99]. The same two studies showed high patient compliance to the chosen dose scheduling of oxaliplatin [95]. It is tempting to speculate that oxaliplatin-based neoadjuvant therapy, when administered at an intensity that does not compromise patient compliance to the multimodal treatment protocol, may promote an abscopal immune response [100].

4.3. Neoadjuvant Treatment of Oligometastatic Disease

In liver-confined metastatic CRC with a therapeutic intent for surgical resection or radiofrequency ablation, oxaliplatin-based NACT can be used for patient selection with respect to tumor aggressiveness, disease down-sizing, or conversion of initially unresectable disease, three sides to the same story. Although the EPOC trial showed no overall survival (OS) benefit for patients randomized to perioperative oxaliplatin-based chemotherapy compared to those receiving only surgery, perhaps explained by the study power to investigate PFS and the inclusion of more than 50% of patients with a single metastatic lesion, the combined-modality study arm has become the standard-of-care [101][102][103]. A correlative examination of the surgical specimens revealed that the neoadjuvant therapy caused tumor infiltration of CD3-positive lymphocytes and that a high count of the CD3-positive cells at the invasive margin between tumor and the liver tissue was beneficial for PFS [104]. In terms of response rates of initially unresectable CLM, the best outcomes in randomized trials were observed for regimens containing irinotecan or cetuximab in addition to oxaliplatin-based NACT [105][106], with improved long-term outcomes for both resected and non-resected patients reported for the former regimen [107][108]. Meta-analyses have been discordant regarding survival benefit of perioperative chemotherapy in patients with initially resectable CLM [109][110].

Hepatic artery infusion (HAI) chemotherapy is attractive as it limits systemic toxicity and allows combination with systemic therapy. A number of early-phase trials have investigated the concept, using oxaliplatin as the HAI compound for unresectable CLM with treatment toxicity and response as endpoints, but only one study has been carried on with the aim of transforming to resectable disease by using oxaliplatin, irinotecan, and fluorouracil [111]. The investigators have also examined systemic exposure of the HAI chemotherapeutics in terms of pharmacokinetics analyses [112] and pharmacogenetics determinants of outcome [113].

It is clear that immune responses arise from the "off-target" effects of these various treatment approaches. However, their involvement towards the eradication of occult tumor at other sites (abscopal effect) has been essentially unexamined. Thus, we studied antitumor immunity invoked by oxaliplatin-HAI and the long-term outcome of primarily unresectable CLM in patients who had their first recurrence of oxaliplatin-naïve isolated CLM that was considered technically unresectable [114]. Those who presented a rapid and substantial rise in a circulating ICD factor over the initial treatment and at its completion could proceed to CLM ablation (hepatic resection or radiofrequency ablation) or had complete response, were alive at final follow-up 8–12 years later, which is a remarkable outcome. In contrast, those who remained with technically unresectable CLM or had the disease converted to resectability but presented a slow and gradual accretion of the ICD factor, later died of the metastatic disease. Consequently, complete and durable tumor eradication appeared to be contingent on CLM conversion to resectable disease (for macroscopic tumor clearance) along with a strong antitumor immune response (for elimination of disseminated microscopic tumor cells that might cause systemic failure).

4.4. Early-Line Therapy in Unresectable Metastatic Disease

Patients with disseminated CRC make up an extremely heterogeneous group, with survival rates depending on the metastatic sites, tumor load, and severity of systemic inflammation; however, median OS has improved to approximately 30 months in clinical trials [115]. The powerful ICB effects with respect to tumor regression rates and disease control durability in patients with dMMR/MSI-high CRC have not been seen in pMMR cases. A variety of studies that investigate strategies to enhance cytotoxic T-cell activation and tumor infiltration in combination with ICB therapy are ongoing [116], and the first reports on outcomes can soon be expected [117][118]. Examples of how to combine ICB with immune-modulating conventional therapies will be discussed below. If such attempts succeed to become early-line treatments of metastatic disease, advanced CRC may be converted into a lifelong controllable illness for the dominant pMMR patient population.

References

1. Ferlay, J.; Soerjomataram, I.; Dikshit, R.; Eser, S.; Mathers, C.; Rebelo, M.; Parkin, D.M.; Forman, D.; Bray, F. Cancer incidence and mortality worldwide: Sources, methods and major patterns in GLOBOCAN 2012. *Int. J. Cancer* 2015, 136, E359–E386.
2. Kuipers, E.J.; Grady, W.M.; Lieberman, D.; Seufferlein, T.; Sung, J.J.; Boelens, P.G.; van de Velde, C.J.; Watanabe, T. Colorectal cancer. *Nat. Rev. Dis. Primers* 2015, 1, 15065.
3. Boland, C.R.; Goel, A. Microsatellite instability in colorectal cancer. *Gastroenterology* 2010, 138, 2073–2087.
4. Sinicrope, F.A.; Foster, N.R.; Thibodeau, S.N.; Marsoni, S.; Monges, G.; Labianca, R.; Kim, G.P.; Yothers, G.; Allegra, C.; Moore, M.J. et al. DNA mismatch repair status and colon cancer recurrence and survival in clinical trials of 5-fluorouracil-based adjuvant therapy. *J. Natl. Cancer. Inst* 2011, 103, 863–875.
5. Riihimäki, M.; Hemminki, A.; Sundquist, J.; Hemminki, K. Patterns of metastasis in colon and rectal cancer. *Sci. Rep.* 2016, 6, 29765.
6. Augestad, K.M.; Keller, D.S.; Bakaki, P.M.; Rose, J.; Koroukian, S.M.; Oresland, T.; Delaney, C.P. The impact of rectal cancer tumor height on recurrence rates and metastatic location: A competing risk analysis of a national database. *Cancer. Epidemiol* 2018, 53, 56–64.
7. Meltzer, S.; Bakke, K.M.; Rød, K.L.; Negård, A.; Flatmark, K.; Solbakken, A.M.; Kristensen, A.T.; Fuglestad, A.J.; Kersten, C.; Dueland, S. et al. Sex-related differences in primary metastatic site in rectal cancer; associated with hemodynamic factors? *Clin. Transl. Radiat. Oncol* 2019, 21, 5–10.
8. Hadden, W.J.; de Reuver, P.R.; Brown, K.; Mittal, A.; Samra, J.S.; Hugh, T.J. Resection of colorectal liver metastases and extra-hepatic disease: A systematic review and proportional meta-analysis of survival outcomes. *Hpb. (Oxf.)* 2016, 18, 209–220.
9. Choi, B.J.; Park, S.A.; Lee, S.Y.; Cha, Y.N.; Surh, Y.J. Hypoxia induces epithelial-mesenchymal transition in colorectal cancer cells through ubiquitin-specific protease 47-mediated stabilization of Snail: A potential role of Sox9. *Sci. Rep.* 2017, 7, 15918.
10. Casazza, A.; Di Conza, G.; Wenes, M.; Finisguerra, V.; Deschoemaeker, S.; Mazzone, M. Tumor stroma: A complexity dictated by the hypoxic tumor microenvironment. *Oncogene* 2014, 33, 1743–1754.
11. Minassian, L.M.; Cotechini, T.; Huitema, E.; Graham, C.H. Hypoxia-induced resistance to chemotherapy in cancer. *Adv. Exp. Med. Biol* 2019, 1136, 123–129.
12. Bakke, K.M.; Meltzer, S.; Grøvik, E.; Negård, A.; Holmedal, S.H.; Gjesdal, K.I.; Bjørnerud, A.; Ree, A.H.; Redalen, K.R. Sex differences and tumor blood flow from dynamic susceptibility contrast MRI are associated with treatment response after chemoradiation and long-term survival in rectal cancer. *Radiology*. (in press).
13. Smyth, M.J.; Ngiew, S.F.; Ribas, A.; Teng, M.W. Combination cancer immunotherapies tailored to the tumour microenvironment. *Nat. Rev. Clin. Oncol* 2016, 13, 143–158.
14. Noman, M.Z.; Hasmin, M.; Lequeux, A.; Xiao, M.; Duhem, C.; Chouaib, S.; Berchem, G.; Janji, B. Improving cancer immunotherapy by targeting the hypoxic tumor microenvironment: New opportunities and challenges. *Cells* 2019, 8, 1083.
15. Chalabi, M.; Fanchi, L.F.; Dijkstra, K.K.; Van den Berg, J.G.; Aalbers, A.G.; Sikorska, K.; Lopez-Yurda, M.; Grootscholten, C.; Beets, G.L.; Snaebjornsson, P. et al. Neoadjuvant immunotherapy leads to pathological responses in MMR-proficient and MMR-deficient early-stage colon cancers. *Nat. Med.* 2020, 26, 566–576.
16. Ludford, K.; Cohen, R.; Svrcek, M.; Foo, W.C.; Colle, R.; Parc, Y.; Thomas, J.V.; Morris, V.K.; Kopetz, S.; Chang, G.J. et al. Pathological tumor response following immune checkpoint blockade for deficient mismatch repair advanced colorectal cancer. *J. Natl. Cancer. Inst* 2020, doi:10.1093/jnci/djaa052.
17. Le, D.T.; Uram, J.N.; Wang, H.; Bartlett, B.R.; Kemberling, H.; Eyring, A.D.; Skora, A.D.; Luber, B.S.; Azad, N.S.; Laheru, D. et al. PD-1 Blockade in Tumors with Mismatch-Repair Deficiency. *N. Engl. J. Med.* 2015, 372, 2509–2520.
18. Le, D.T.; Durham, J.N.; Smith, K.N.; Wang, H.; Bartlett, B.R.; Aulakh, L.K.; Lu, S.; Kemberling, H.; Wilt, C.; Luber, B.S. et al. Mismatch repair deficiency predicts response of solid tumors to PD-1 blockade. *Science* 2017, 357, 409–413.
19. Overman, M.J.; McDermott, R.; Leach, J.L.; Lonardi, S.; Lenz, H.J.; Morse, M.A.; Desai, J.; Hill, A.; Axelson, M.; Moss, R.A. et al. Nivolumab in patients with metastatic DNA mismatch repair-deficient or microsatellite instability-high colorectal cancer (CheckMate 142): An open-label, multicentre, phase 2 study. *Lancet. Oncol* 2017, 18, 1182–1191.
20. Ree, A.H.; Nygaard, V.; Russnes, H.G.; Heinrich, D.; Nygaard, V.; Johansen, C.; Bergheim, I.R.; Hovig, E.; Beiske, K.; Negård, A. et al. Responsiveness to PD-1 blockade in end-stage colon cancer with gene locus 9p24.1 copy-number gain. *Cancer. Immunol. Res.* 2019, 7, 701–706.

21. Krieger, T.; Pearson, I.; Bell, J.; Doherty, J.; Robbins, P. Targeted literature review on use of tumor mutational burden status and programmed cell death ligand 1 expression to predict outcomes of checkpoint inhibitor treatment. *Diagn. Pathol* 2020, 15, 6.
22. Linnekamp, J.F.; Hooff, S.R.V.; Prasetyanti, P.R.; Kandimalla, R.; Buikhuisen, J.Y.; Fessler, E.; Ramesh, P.; Lee, K.; Bochove, G.G.W.; de Jong, J.H. et al. Consensus molecular subtypes of colorectal cancer are recapitulated in in vitro and in vivo models. *Cell. Death. Differ.* 2018, 25, 616–633.
23. Sveen, A.; Bruun, J.; Eide, P.W.; Eilertsen, I.A.; Ramirez, L.; Murumagi, A.; Arjama, M.; Danielsen, S.A.; Kryeziu, K.; Elez, E. et al. Colorectal cancer Consensus Molecular Subtypes translated to preclinical models uncover potentially targetable cancer cell dependencies. *Clin. Cancer. Res.* 2018, 24, 794–806.
24. Dienstmann, R.; Vermeulen, L.; Guinney, J.; Kopetz, S.; Tejpar, S.; Tabernero, J. Consensus molecular subtypes and the evolution of precision medicine in colorectal cancer. *Nat. Rev. Cancer* 2017, 17, 79–92.
25. Grasso, C.S.; Giannakis, M.; Wells, D.K.; Hamada, T.; Mu, X.J.; Quist, M.; Nowak, J.A.; Nishihara, R.; Qian, Z.R.; Inamura, K. et al. Genetic mechanisms of immune evasion in colorectal cancer. *Cancer. Discov* 2018, 8, 730–749.
26. Craig, S.G.; Humphries, M.P.; Alderdice, M.; Bingham, V.; Richman, S.D.; Loughrey, M.B.; Coleman, H.G.; Viratham-Pulsawatdi, A.; McCombe, K.; Murray, G.I.; Blake, A. et al. Immune status is prognostic for poor survival in colorectal cancer patients and is associated with tumour hypoxia. *Br. J. Cancer* 2020, doi:10.1038/s41416-020-0985-5.
27. Isella, C.; Brundu, F.; Bellomo, S.E.; Galimi, F.; Zanella, E.; Porporato, R.; Petti, C.; Fiori, A.; Orzan, F.; Senetta, R. et al. Selective analysis of cancer-cell intrinsic transcriptional traits defines novel clinically relevant subtypes of colorectal cancer. *Nat. Commun* 2017, 8, 15107.
28. Guinney, J.; Dienstmann, R.; Wang, X.; de Reynies, A.; Schlicker, A.; Soneson, C.; Marisa, L.; Roepman, P.; Nyamundanda, G.; Angelino, P. et al. The consensus molecular subtypes of colorectal cancer. *Nat. Med.* 2015, 21, 1350–1356.
29. Galon, J.; Costes, A.; Sanchez-Cabo, F.; Kirilovsky, A.; Mlecnik, B.; Lagorce-Pages, C.; Tosolini, M.; Camus, M.; Berger, A.; Wind, P. et al. Type, density, and location of immune cells within human colorectal tumors predict clinical outcome. *Science* 2006, 313, 1960–1964.
30. Angell, H.; Galon, J. From the immune contexture to the Immunoscore: The role of prognostic and predictive immune markers in cancer. *Curr. Opin. Immunol* 2013, 25, 261–267.
31. Pages, F.; Berger, A.; Camus, M.; Sanchez-Cabo, F.; Costes, A.; Molitor, R.; Mlecnik, B.; Kirilovsky, A.; Nilsson, M.; Damotte, D. et al. Effector memory T cells, early metastasis, and survival in colorectal cancer. *N. Engl. J. Med.* 2005, 353, 2654–2666.
32. Mlecnik, B.; Bindea, G.; Angell, H.K.; Maby, P.; Angelova, M.; Tougeron, D.; Church, S.E.; Lafontaine, L.; Fischer, M.; Fredriksen, T. et al. Integrative Analyses of Colorectal Cancer Show Immunoscore Is a Stronger Predictor of Patient Survival Than Microsatellite Instability. *Immunity* 2016, 44, 698–711.
33. Glaire, M.A.; Domingo, E.; Sveen, A.; Bruun, J.; Nesbakken, A.; Nicholson, G.; Novelli, M.; Lawson, K.; Oukrif, D.; Kildal, W. et al. Tumour-infiltrating CD8+ lymphocytes and colorectal cancer recurrence by tumour and nodal stage. *Br. J. Cancer* 2019, 121, 474–482.
34. Pages, F.; Mlecnik, B.; Marliot, F.; Bindea, G.; Ou, F.S.; Bifulco, C.; Lugli, A.; Zlobec, I.; Rau, T.T.; Berger, M.D. et al. International validation of the consensus Immunoscore for the classification of colon cancer: A prognostic and accuracy study. *Lancet* 2018, 391, 2128–2139.
35. Pages, F.; Andre, T.; Taieb, J.; Vernerey, D.; Henriques, J.; Borg, C.; Marliot, F.; Ben Jannet, R.; Louvet, C.; Mineur, L. et al. Prognostic and predictive value of the Immunoscore in the prospective IDEA France PRODIGE-GERCOR cohort study. *Ann. Oncol* 2020, 31, 921–929.
36. Angell, H.K.; Bruni, D.; Barrett, J.C.; Herbst, R.; Galon, J. The Immunoscore: Colon cancer and beyond. *Clin. Cancer. Res.* 2020, 26, 332–339.
37. Ogino, S.; Giannakis, M. Immunoscore for (colorectal) cancer precision medicine. *Lancet* 2018, 391, 2084–2086.
38. Forssell, J.; Oberg, A.; Henriksson, M.L.; Stenling, R.; Jung, A.; Palmqvist, R. High macrophage infiltration along the tumor front correlates with improved survival in colon cancer. *Clin. Cancer. Res.* 2007, 13, 1472–1479.
39. Ladoire, S.; Martin, F.; Ghiringhelli, F. Prognostic role of FOXP3+ regulatory T cells infiltrating human carcinomas: The paradox of colorectal cancer. *Cancer. Immunol. Immunother* 2011, 60, 909–918.
40. Malietzis, G.; Lee, G.H.; Jenkins, J.T.; Bernardo, D.; Moorghen, M.; Knight, S.C.; Al-Hassi, H.O. Prognostic value of the tumour-infiltrating dendritic cells in colorectal cancer: A systematic review. *Cell. Commun. Adhes* 2015, 22, 9–14.

41. Salama, P.; Phillips, M.; Grieu, F.; Morris, M.; Zeps, N.; Joseph, D.; Platell, C.; Iacopetta, B. Tumor-infiltrating FOXP3+ T regulatory cells show strong prognostic significance in colorectal cancer. *J. Clin. Oncol* 2009, 27, 186–192.
42. Saito, T.; Nishikawa, H.; Wada, H.; Nagano, Y.; Sugiyama, D.; Atarashi, K.; Maeda, Y.; Hamaguchi, M.; Ohkura, N.; Sato, E. et al. Two FOXP3(+)CD4(+) T cell subpopulations distinctly control the prognosis of colorectal cancers. *Nat. Med.* 2016, 22, 679–684.
43. Haasnoot, K.J.C.; Backes, Y.; Moons, L.M.G.; Kranenburg, O.; Trinh, A.; Vermeulen, L.; Noe, M.; Tuynman, J.B.; van Lent, A.U.G.; van Ginneken, R. et al. Associations of non-pedunculated T1 colorectal adenocarcinoma outcome with consensus molecular subtypes, immunoscore, and microsatellite status: A multicenter case-cohort study. *Mod. Pathol* 2020, doi:10.1038/s41379-020-0598-9.
44. Longley, D.B.; Harkin, D.P.; Johnston, P.G. 5-fluorouracil: Mechanisms of action and clinical strategies. *Nat. Rev. Cancer* 2003, 3, 330–338.
45. Bruchard, M.; Mignot, G.; Derangere, V.; Chalmin, F.; Chevriaux, A.; Vegran, F.; Boireau, W.; Simon, B.; Ryffel, B.; Connat, J.L. et al. Chemotherapy-triggered cathepsin B release in myeloid-derived suppressor cells activates the Nlrp3 inflammasome and promotes tumor growth. *Nat. Med.* 2013, 19, 57–64.
46. Vincent, J.; Mignot, G.; Chalmin, F.; Ladoire, S.; Bruchard, M.; Chevriaux, A.; Martin, F.; Apetoh, L.; Rebe, C.; Ghiringhelli, F. 5-Fluorouracil selectively kills tumor-associated myeloid-derived suppressor cells resulting in enhanced T cell-dependent antitumor immunity. *Cancer. Res.* 2010, 70, 3052–3061.
47. Van Der Kraak, L.; Goel, G.; Ramanan, K.; Kaltenmeier, C.; Zhang, L.; Normolle, D.P.; Freeman, G.J.; Tang, D.; Nason, K.S.; Davison, J.M. et al. 5-Fluorouracil upregulates cell surface B7-H1 (PD-L1) expression in gastrointestinal cancers. *J. Immunother. Cancer* 2016, 4, 65.
48. Raymond, E.; Faivre, S.; Chaney, S.; Woynarowski, J.; Cvitkovic, E. Cellular and molecular pharmacology of oxaliplatin. *Mol. Cancer* 2002, 1, 227–235.
49. Hato, S.V.; Khong, A.; de Vries, I.J.; Lesterhuis, W.J. Molecular pathways: The immunogenic effects of platinum-based chemotherapeutics. *Clin. Cancer Res.* 2014, 20, 2831–2837.
50. Galluzzi, L.; Vitale, I.; Warren, S.; Adjemian, S.; Agostinis, P.; Martinez, A.B.; Chan, T.A.; Coukos, G.; Demaria, S.; Deutsch, E. et al. Consensus guidelines for the definition, detection and interpretation of immunogenic cell death. *J. Immunother. Cancer* 2020, 8, e000337.
51. Pfirschke, C.; Engblom, C.; Rickelt, S.; Cortez-Retamozo, V.; Garriss, C.; Pucci, F.; Yamazaki, T.; Poirier-Colame, V.; Newton, A.; Redouane, Y. et al. Immunogenic chemotherapy sensitizes tumors to checkpoint blockade therapy. *Immunity* 2016, 44, 343–354.
52. Wang, W.; Wu, L.; Zhang, J.; Wu, H.; Han, E.; Guo, Q. Chemoimmunotherapy by combining oxaliplatin with immune checkpoint blockades reduced tumor burden in colorectal cancer animal model. *Biochem. Biophys. Res. Commun* 2017, 487, 1–7.
53. Sun, F.; Cui, L.; Li, T.; Chen, S.; Song, J.; Li, D. Oxaliplatin induces immunogenic cell death and enhances therapeutic efficacy of checkpoint inhibitor in a model of murine lung carcinoma. *J. Recept. Signal. Transduct. Res.* 2019, 39, 208–214.
54. Gonzalez-Aparicio, M.; Alzuguren, P.; Mauleon, I.; Medina-Echeverez, J.; Hervas-Stubbs, S.; Mancheno, U.; Berraondo, P.; Cretaz, J.; Gonzalez-Aseguinolaza, G.; Prieto, J. et al. Oxaliplatin in combination with liver-specific expression of interleukin 12 reduces the immunosuppressive microenvironment of tumours and eradicates metastatic colorectal cancer in mice. *Gut* 2011, 60, 341–349.
55. Tesniere, A.; Schlemmer, F.; Boige, V.; Kepp, O.; Martins, I.; Ghiringhelli, F.; Aymeric, L.; Michaud, M.; Apetoh, L.; Barault, L. et al. Immunogenic death of colon cancer cells treated with oxaliplatin. *Oncogene* 2010, 29, 482–491.
56. Baskar, R.; Lee, K.A.; Yeo, R.; Yeoh, K.W. Cancer and radiation therapy: Current advances and future directions. *Int. J. Med. Sci* 2012, 9, 193–199.
57. Castedo, M.; Perfettini, J.L.; Roumier, T.; Andreau, K.; Medema, R.; Kroemer, G. Cell death by mitotic catastrophe: A molecular definition. *Oncogene* 2004, 23, 2825–2837.
58. Formenti, S.C.; Demaria, S. Radiation therapy to convert the tumor into an in situ vaccine. *Int. J. Radiat. Oncol. Biol. Phys* 2012, 84, 879–880.
59. Demaria, S.; Ng, B.; Devitt, M.L.; Babb, J.S.; Kawashima, N.; Liebes, L.; Formenti, S.C. Ionizing radiation inhibition of distant untreated tumors (abscopal effect) is immune mediated. *Int. J. Radiat. Oncol. Biol. Phys* 2004, 58, 862–870.
60. Golden, E.B.; Chhabra, A.; Chachoua, A.; Adams, S.; Donach, M.; Fenton-Kerimian, M.; Friedman, K.; Ponzo, F.; Babb, J.S.; Goldberg, J. et al. Local radiotherapy and granulocyte-macrophage colony-stimulating factor to generate abscopal responses in patients with metastatic solid tumours: A proof-of-principle trial. *Lancet. Oncol* 2015, 16, 795–803.

61. Golden, E.B.; Demaria, S.; Schiff, P.B.; Chachoua, A.; Formenti, S.C. An abscopal response to radiation and ipilimumab in a patient with metastatic non-small cell lung cancer. *Cancer Immunol Res.* 2013, 1, 365–372.
62. Ngwa, W.; Irabor, O.C.; Schoenfeld, J.D.; Hesser, J.; Demaria, S.; Formenti, S.C. Using immunotherapy to boost the abscopal effect. *Nat. Rev. Cancer* 2018, 18, 313–322.
63. Postow, M.A.; Callahan, M.K.; Barker, C.A.; Yamada, Y.; Yuan, J.; Kitano, S.; Mu, Z.; Rasalan, T.; Adamow, M.; Ritter, E. et al. Immunologic correlates of the abscopal effect in a patient with melanoma. *N. Engl. J. Med.* 2012, 366, 925–931.
64. Liu, X.; Yao, J.; Song, L.; Zhang, S.; Huang, T.; Li, Y. Local and abscopal responses in advanced intrahepatic cholangiocarcinoma with low TMB, MSS, pMMR and negative PD-L1 expression following combined therapy of SBRT with PD-1 blockade. *J. Immunother. Cancer* 2019, 7, 204.
65. Watanabe, T.; Firat, E.; Scholber, J.; Gaedicke, S.; Heinrich, C.; Luo, R.; Ehrat, N.; Multhoff, G.; Schmitt-Graeff, A.; Grosu, A.L. et al. Deep abscopal response to radiotherapy and anti-PD-1 in an oligometastatic melanoma patient with unfavorable pretreatment immune signature. *Cancer. Immunol. Immunother* 2020, doi:10.1007/s00262-020-02587-8.
66. Brooks, E.D.; Chang, J.Y. Time to abandon single-site irradiation for inducing abscopal effects. *Nat. Rev. Clin. Oncol* 2019, 16, 123–135.
67. Arina, A.; Gutionov, S.; Weichselbaum, R.R. Radiotherapy and immunotherapy for cancer: From “systemic” to “multisite”. *Clin. Cancer. Res.* 2020, 26, 2777–2782.
68. Kang, S.M.; Kim, M.H.; Song, K.H.; Jung, S.Y.; Ahn, J.; Hwang, S.G.; Lee, J.H.; Lim, D.S.; Song, J.Y. Modulation of dendritic cell function by the radiation-mediated secretory protein gamma-synuclein. *Cell. Death. Discov* 2015, 1, 15011.
69. Thomas, D.A.; Massague, J. TGF-beta directly targets cytotoxic T cell functions during tumor evasion of immune surveillance. *Cancer. Cell* 2005, 8, 369–380.
70. Tauriello, D.V.F.; Palomo-Ponce, S.; Stork, D.; Berenguer-Llergo, A.; Badia-Ramentol, J.; Iglesias, M.; Sevillano, M.; Ibiza, S.; Canellas, A.; Hernando-Momblona, X. et al. TGFb drives immune evasion in genetically reconstituted colon cancer metastasis. *Nature* 2018, 554, 538–543.
71. Yamagiwa, S.; Gray, J.D.; Hashimoto, S.; Horwitz, D.A. A role for TGF-beta in the generation and expansion of CD4+CD25+ regulatory T cells from human peripheral blood. *J. Immunol* 2001, 166, 7282–7289.
72. Fridlender, Z.G.; Sun, J.; Kim, S.; Kapoor, V.; Cheng, G.; Ling, L.; Worthen, G.S.; Albelda, S.M. Polarization of tumor-associated neutrophil phenotype by TGF-beta: N1 versus N2 TAN. *Cancer. Cell* 2009, 16, 183–194.
73. Mantovani, A.; Sozzani, S.; Locati, M.; Allavena, P.; Sica, A. Macrophage polarization: Tumor-associated macrophages as a paradigm for polarized M2 mononuclear phagocytes. *Trends. Immunol* 2002, 23, 549–555.
74. Golden, E.B.; Frances, D.; Pellicciotta, I.; Demaria, S.; Helen Barcellos-Hoff, M.; Formenti, S.C. Radiation fosters dose-dependent and chemotherapy-induced immunogenic cell death. *Oncoimmunology* 2014, 3, e28518.
75. Grapin, M.; Richard, C.; Limagne, E.; Boidot, R.; Morgand, V.; Bertaut, A.; Derangere, V.; Laurent, P.A.; Thibaudin, M.; Fumet, J.D. et al. Optimized fractionated radiotherapy with anti-PD-L1 and anti-TIGIT: A promising new combination. *J. Immunother. Cancer* 2019, 7, 160.
76. Manda, K.; Glasow, A.; Paape, D.; Hildebrandt, G. Effects of ionizing radiation on the immune system with special emphasis on the interaction of dendritic and T cells. *Front. Oncol* 2012, 2, 102.
77. Vanpouille-Box, C.; Alard, A.; Aryankalayil, M.J.; Sarfraz, Y.; Diamond, J.M.; Schneider, R.J.; Inghirami, G.; Coleman, C.N.; Formenti, S.C.; Demaria, S. DNA exonuclease Trex1 regulates radiotherapy-induced tumour immunogenicity. *Nat. Commun* 2017, 8, 15618.
78. Aklilu, M.; Eng, C. The current landscape of locally advanced rectal cancer. *Nat. Rev. Clin. Oncol* 2011, 8, 649–659.
79. Bosset, J.F.; Calais, G.; Mineur, L.; Maingon, P.; Stojanovic-Rundic, S.; Bensadoun, R.J.; Bardet, E.; Beny, A.; Ollier, J.C.; Bolla, M. et al. Fluorouracil-based adjuvant chemotherapy after preoperative chemoradiotherapy in rectal cancer: Long-term results of the EORTC 22921 randomised study. *Lancet. Oncol* 2014, 15, 184–190.
80. Rodel, C.; Graeven, U.; Fietkau, R.; Hohenberger, W.; Hothorn, T.; Arnold, D.; Hofheinz, R.D.; Ghadimi, M.; Wolff, H.A.; Lang-Welzenbach, M. et al. Oxaliplatin added to fluorouracil-based preoperative chemoradiotherapy and postoperative chemotherapy of locally advanced rectal cancer (the German CAO/ARO/AIO-04 study): Final results of the multicentre, open-label, randomised, phase 3 trial. *Lancet. Oncol* 2015, 16, 979–989.
81. Breugnot, A.J.; Swets, M.; Bosset, J.F.; Collette, L.; Sainato, A.; Cionini, L.; Glynn-Jones, R.; Counsell, N.; Bastiaannet, E.; van den Broek, C.B. et al. Adjuvant chemotherapy after preoperative (chemo)radiotherapy and surgery

for patients with rectal cancer: A systematic review and meta-analysis of individual patient data. *Lancet. Oncol* 2015, 16, 200–207.

82. Hofheinz, R.D.; Rodel, C.; Burkholder, I.; Kienle, P. Adjuvant chemotherapy for rectal cancer. *Lancet. Oncol* 2015, 16, e154–e155.
83. Petersen, S.H.; Harling, H.; Kirkeby, L.T.; Wille-Jorgensen, P.; Mocellin, S. Postoperative adjuvant chemotherapy in rectal cancer operated for cure. *Cochrane. Database. Syst. Rev.* 2012, 2012, CD004078.
84. Calvo, F.A.; Serrano, F.J.; Diaz-Gonzalez, J.A.; Gomez-Espi, M.; Lozano, E.; Garcia, R.; de la Mata, D.; Arranz, J.A.; Garcia-Alfonso, P.; Perez-Manga, G. et al. Improved incidence of pT0 downstaged surgical specimens in locally advanced rectal cancer (LARC) treated with induction oxaliplatin plus 5-fluorouracil and preoperative chemoradiation. *Ann. Oncol* 2006, 17, 1103–1110.
85. Chau, I.; Brown, G.; Cunningham, D.; Tait, D.; Wotherspoon, A.; Norman, A.R.; Tebbutt, N.; Hill, M.; Ross, P.J.; Massey, A. et al. Neoadjuvant capecitabine and oxaliplatin followed by synchronous chemoradiation and total mesorectal excision in magnetic resonance imaging-defined poor-risk rectal cancer. *J. Clin. Oncol* 2006, 24, 668–674.
86. Chua, Y.J.; Barbachano, Y.; Cunningham, D.; Oates, J.R.; Brown, G.; Wotherspoon, A.; Tait, D.; Massey, A.; Tebbutt, N.C.; Chau, I. Neoadjuvant capecitabine and oxaliplatin before chemoradiotherapy and total mesorectal excision in MRI-defined poor-risk rectal cancer: A phase 2 trial. *Lancet. Oncol* 2010, 11, 241–248.
87. Dewdney, A.; Cunningham, D.; Tabernero, J.; Capdevila, J.; Glimelius, B.; Cervantes, A.; Tait, D.; Brown, G.; Wotherspoon, A.; Gonzalez de Castro, D. et al. Multicenter randomized phase II clinical trial comparing neoadjuvant oxaliplatin, capecitabine, and preoperative radiotherapy with or without cetuximab followed by total mesorectal excision in patients with high-risk rectal cancer (EXPERT-C). *J. Clin. Oncol* 2012, 30, 1620–1627.
88. Gunnlaugsson, A.; Anderson, H.; Fernebro, E.; Kjellen, E.; Bystrom, P.; Berglund, K.; Ekelund, M.; Pahlman, L.; Holm, T.; Glimelius, B. et al. Multicentre phase II trial of capecitabine and oxaliplatin in combination with radiotherapy for unresectable colorectal cancer: The CORGI-L Study. *Eur J. Cancer* 2009, 45, 807–813.
89. Koeberle, D.; Burkhard, R.; von Moos, R.; Winterhalder, R.; Hess, V.; Heitzmann, F.; Ruhstaller, T.; Terraciano, L.; Neuweiler, J.; Bieri, G. et al. Phase II study of capecitabine and oxaliplatin given prior to and concurrently with preoperative pelvic radiotherapy in patients with locally advanced rectal cancer. *Br. J. Cancer* 2008, 98, 1204–1209.
90. Schou, J.V.; Larsen, F.O.; Rasch, L.; Linnemann, D.; Langhoff, J.; Hogdall, E.; Nielsen, D.L.; Vistisen, K.; Fromm, A.; Jensen, B.V. Induction chemotherapy with capecitabine and oxaliplatin followed by chemoradiotherapy before total mesorectal excision in patients with locally advanced rectal cancer. *Ann. Oncol* 2012, 23, 2627–2633.
91. van der Valk, M.J.M.; Marijnen, C.A.M.; van Etten, B.; Dijkstra, E.A.; Hilling, D.E.; Meershoek-Klein Kranenbarg, E.; Putter, H.; Roodvoets, A.G.H.; Bahadoer, R.R. et al. Collaborative investigators. Compliance and tolerability of short-course radiotherapy followed by preoperative chemotherapy and surgery for high-risk rectal cancer – results of the international randomized RAPIDO-trial. *Radiother. Oncol* 2020, 147, 75–83.
92. Hospers, G.; Bahadoer, R.R.; Dijkstra, E.A.; van Etten, B.; Marijnen, C.; Putter, H.; Meershoek-Klein Kranenbarg, E.; Roodvoets, A.G.; Nagtegaal, I.D.; Beets-Tan, R.G.H. et al. Short-course radiotherapy followed by chemotherapy before TME in locally advanced rectal cancer: The randomized RAPIDO trial. *J. Clin. Oncol* 2020, 38 suppl, abstr 4006.
93. Lawrence, T.S.; Haffty, B.G.; Harris, J.R. Milestones in the use of combined-modality radiation therapy and chemotherapy. *J. Clin. Oncol* 2014, 32, 1173–1179.
94. Aschele, C.; Cionini, L.; Lonardi, S.; Pinto, C.; Cordio, S.; Rosati, G.; Artale, S.; Tagliagambe, A.; Ambrosini, G.; Rosetti, P. et al. Primary tumor response to preoperative chemoradiation with or without oxaliplatin in locally advanced rectal cancer: Pathologic results of the STAR-01 randomized phase III trial. *J. Clin Oncol* 2011, 29, 2773–2780.
95. Deng, Y.; Chi, P.; Lan, P.; Wang, L.; Chen, W.; Cui, L.; Chen, D.; Cao, J.; Wei, H.; Peng, X. et al. Modified FOLFOX6 With or Without Radiation Versus Fluorouracil and Leucovorin With Radiation in Neoadjuvant Treatment of Locally Advanced Rectal Cancer: Initial Results of the Chinese FOWARC Multicenter, Open-Label, Randomized Three-Arm Phase III Trial. *J. Clin. Oncol* 2016, 34, 3300–3307.
96. Gerard, J.P.; Chimorey, E.; Gourgou-Bourgade, S.; Benezery, K.; de Laroche, G.; Mahe, M.A.; Boige, V.; Juzyna, B. Clinical complete response (cCR) after neoadjuvant chemoradiotherapy and conservative treatment in rectal cancer. Findings from the ACCORD 12/PRODIGE 2 randomized trial. *Radiother. Oncol* 2015, 115, 246–252.
97. Jiao, D.; Zhang, R.; Gong, Z.; Liu, F.; Chen, Y.; Yu, Q.; Sun, L.; Duan, H.; Zhu, S.; Liu, F. et al. Fluorouracil-based preoperative chemoradiotherapy with or without oxaliplatin for stage II/III rectal cancer: A 3-year follow-up study. *Chin. J. Cancer. Res.* 2015, 27, 588–596.
98. O'Connell, M.J.; Colangelo, L.H.; Beart, R.W.; Petrelli, N.J.; Allegra, C.J.; Sharif, S.; Pitot, H.C.; Shields, A.F.; Landry, J.C.; Ryan, D.P. et al. Capecitabine and oxaliplatin in the preoperative multimodality treatment of rectal cancer: Surgical end points from National Surgical Adjuvant Breast and Bowel Project trial R-04. *J. Clin. Oncol* 2014, 32, 1927–1934.

99. Schmoll, H.J.; Haustermans, K.; Price, T.J.; Nordlinger, B.; Hofheinz, R.; Daisne, J.F.; Janssens, J.; Brenner, B.; Schmidt, P.; Reinel, H. et al. Preoperative chemoradiotherapy and postoperative chemotherapy with capecitabine and oxaliplatin versus capecitabine alone in locally advanced rectal cancer: Disease-free survival results at interim analysis. *J. Clin. Oncol* 2014, *S32*, 3501.
100. Kalanxhi, E.; Meltzer, S.; Schou, J.V.; Larsen, F.O.; Dueland, S.; Flatmark, K.; Jensen, B.V.; Hole, K.H.; Seierstad, T.; Redalen, K.R. et al. Systemic immune response induced by oxaliplatin-based neoadjuvant therapy favours survival without metastatic progression in high-risk rectal cancer. *Br. J. Cancer* 2018, *118*, 1322–1328.
101. Kuhlmann, K.; van Hilst, J.; Fisher, S.; Poston, G. Management of disappearing colorectal liver metastases. *Eur. J. Surg. Oncol* 2016, *42*, 1798–1805.
102. Nordlinger, B.; Sorbye, H.; Glimelius, B.; Poston, G.J.; Schlag, P.M.; Rougier, P.; Bechstein, W.O.; Primrose, J.N.; Walpole, E.T.; Finch-Jones, M. et al. Perioperative chemotherapy with FOLFOX4 and surgery versus surgery alone for resectable liver metastases from colorectal cancer (EORTC Intergroup trial 40983): A randomised controlled trial. *Lancet* 2008, *371*, 1007–1016.
103. Nordlinger, B.; Sorbye, H.; Glimelius, B.; Poston, G.J.; Schlag, P.M.; Rougier, P.; Bechstein, W.O.; Primrose, J.N.; Walpole, E.T.; Finch-Jones, M. et al. Perioperative FOLFOX4 chemotherapy and surgery versus surgery alone for resectable liver metastases from colorectal cancer (EORTC 40983): Long-term results of a randomised, controlled, phase 3 trial. *Lancet. Oncol* 2013, *14*, 1208–1215.
104. Tanis, E.; Julie, C.; Emile, J.F.; Mauer, M.; Nordlinger, B.; Aust, D.; Roth, A.; Lutz, M.P.; Gruenberger, T.; Wrba, F. et al. Prognostic impact of immune response in resectable colorectal liver metastases treated by surgery alone or surgery with perioperative FOLFOX in the randomised EORTC study 40983. *Eur. J. Cancer* 2015, *51*, 2708–2717.
105. Falcone, A.; Ricci, S.; Brunetti, I.; Pfanner, E.; Allegrini, G.; Barbara, C.; Crino, L.; Benedetti, G.; Evangelista, W.; Fanchini, L.; Cortesi, E. et al. Phase III trial of infusional fluorouracil, leucovorin, oxaliplatin, and irinotecan (FOLFOXIRI) compared with infusional fluorouracil, leucovorin, and irinotecan (FOLFIRI) as first-line treatment for metastatic colorectal cancer: The Gruppo Oncologico Nord Ovest. *J. Clin. Oncol* 2007, *25*, 1670–1676.
106. Folprecht, G.; Gruenberger, T.; Bechstein, W.O.; Raab, H.R.; Lordick, F.; Hartmann, J.T.; Lang, H.; Frilling, A.; Stoecklacher, J.; Weitz, J. et al. Tumour response and secondary resectability of colorectal liver metastases following neoadjuvant chemotherapy with cetuximab: The CELIM randomised phase 2 trial. *Lancet. Oncol* 2010, *11*, 38–47.
107. Masi, G.; Loupakis, F.; Pollina, L.; Vasile, E.; Cupini, S.; Ricci, S.; Brunetti, I.M.; Ferraldeschi, R.; Naso, G.; Filipponi, F. et al. Long-term outcome of initially unresectable metastatic colorectal cancer patients treated with 5-fluorouracil/leucovorin, oxaliplatin, and irinotecan (FOLFOXIRI) followed by radical surgery of metastases. *Ann. Surg* 2009, *249*, 420–425.
108. Masi, G.; Vasile, E.; Loupakis, F.; Cupini, S.; Fornaro, L.; Baldi, G.; Salvatore, L.; Cremolini, C.; Stasi, I.; Brunetti, I. et al. Randomized trial of two induction chemotherapy regimens in metastatic colorectal cancer: An updated analysis. *J. Natl. Cancer. Inst* 2011, *103*, 21–30.
109. Liu, W.; Zhou, J.G.; Sun, Y.; Zhang, L.; Xing, B.C. The role of neoadjuvant chemotherapy for resectable colorectal liver metastases: A systematic review and meta-analysis. *Oncotarget* 2016, *7*, 37277–37287.
110. Wang, Z.M.; Chen, Y.Y.; Chen, F.F.; Wang, S.Y.; Xiong, B. Peri-operative chemotherapy for patients with resectable colorectal hepatic metastasis: A meta-analysis. *Eur. J. Surg. Oncol* 2015, *41*, 1197–1203.
111. Levi, F.A.; Boige, V.; Hebbar, M.; Smith, D.; Lepere, C.; Focan, C.; Karaboue, A.; Guimbaud, R.; Carvalho, C.; Tumolo, S. et al. Conversion to resection of liver metastases from colorectal cancer with hepatic artery infusion of combined chemotherapy and systemic cetuximab in multicenter trial OPTILIV. *Ann. Oncol* 2016, *27*, 267–274.
112. Levi, F.; Karaboue, A.; Etienne-Grimaldi, M.C.; Painsaud, G.; Focan, C.; Innominato, P.; Bouchahda, M.; Milano, G.; Chatelut, E. Pharmacokinetics of irinotecan, oxaliplatin and 5-fluorouracil during hepatic artery chronomodulated infusion: A translational European OPTILIV study. *Clin. Pharm.* 2017, *56*, 165–177.
113. Levi, F.; Karaboue, A.; Saffroy, R.; Desterke, C.; Boige, V.; Smith, D.; Hebbar, M.; Innominato, P.; Taieb, J.; Carvalho, C. et al. Pharmacogenetic determinants of outcomes on triplet hepatic artery infusion and intravenous cetuximab for liver metastases from colorectal cancer (European trial OPTILIV, NCT00852228). *Br. J. Cancer* 2017, *117*, 965–973.
114. Abrahamsson, H.; Jensen, B.V.; Berven, L.L.; Nielsen, D.L.; Saltyte Benth, J.; Johansen, J.S.; Larsen, F.O.; Johansen, J.S.; Ree, A.H. Antitumour immunity invoked by hepatic arterial infusion of first-line oxaliplatin predicts durable colorectal cancer control after liver metastasis ablation: 8-12 years of follow-up. *Int. J. Cancer* 2020, *146*, 2019–2026.
115. Van Cutsem, E.; Cervantes, A.; Nordlinger, B.; Arnold, D.; ESMO Guideleines Working Group. Metastatic colorectal cancer: ESMO clinical practice guidelines for diagnosis, treatment and follow-up. *Ann. Oncol* 2014, *25 Suppl 3*, iii1-9.
116. Overman, M.J.; Ernstoff, M.S.; Morse, M.A. Where we stand with immunotherapy in colorectal cancer: Deficient mismatch repair, proficient mismatch repair, and toxicity management. *Am. Soc. Clin. Oncol. Educ Book* 2018, *38*, 239–

117. Stein, A.; Binder, M.; Goekkurt, E.; Lorenzen, S.; Riera-Knorrenschild, J.; Depenbusch, R.; Ettrich, T.J.; Doerfel, S.; Al-Batran, S.E.; Karthaus, M. et al. Avelumab and cetuximab in combination with FOLFOX in patients with previously untreated metastatic colorectal cancer (MCRC): Final results of the phase II AVETUX trial (AIO-KRK-0216). *J. Clin. Oncol* 2020, 38 suppl 4, abstr 96.
118. Ghiringhelli, F.; Chibaudel, B.; Taieb, J.; Bennouna, J.; Martin-Babau, J.; Fonck, M.; Borg, C.; Cohen, R.; Thibaudin, M.; Limagne, E. et al. Durvalumab and tremelimumab in combination with FOLFOX in patients with RAS-mutated, microsatellite-stable, previously untreated metastatic colorectal cancer (MCRC): Results of the first intermediate analysis of the phase Ib/II MEDETREME trial. *J. Clin. Oncol* 2020, 38 suppl, abstr 3006.

Retrieved from <https://encyclopedia.pub/entry/history/show/4044>