

Frame of Reference

Subjects: Others

Contributor: HandWiki Xu

In physics, a frame of reference (or reference frame) consists of an abstract coordinate system and the set of physical reference points that uniquely fix (locate and orient) the coordinate system and standardize measurements within that frame. For n dimensions, $n + 1$ reference points are sufficient to fully define a reference frame. Using rectangular (Cartesian) coordinates, a reference frame may be defined with a reference point at the origin and a reference point at one unit distance along each of the n coordinate axes. In Einsteinian relativity, reference frames are used to specify the relationship between a moving observer and the phenomenon or phenomena under observation. In this context, the phrase often becomes "observational frame of reference" (or "observational reference frame"), which implies that the observer is at rest in the frame, although not necessarily located at its origin. A relativistic reference frame includes (or implies) the coordinate time, which does not correspond across different frames moving relatively to each other. The situation thus differs from Galilean relativity, where all possible coordinate times are essentially equivalent.

Keywords: galilean ; frame of reference ; reference frame

1. Different Aspects of "Frame of Reference"

The need to distinguish between the various meanings of "frame of reference" has led to a variety of terms. For example, sometimes the type of coordinate system is attached as a modifier, as in *Cartesian frame of reference*. Sometimes the state of motion is emphasized, as in *rotating frame of reference*. Sometimes the way it transforms to frames considered as related is emphasized as in *Galilean frame of reference*. Sometimes frames are distinguished by the scale of their observations, as in *macroscopic* and *microscopic frames of reference*.^[1]

In this article, the term *observational frame of reference* is used when emphasis is upon the *state of motion* rather than upon the coordinate choice or the character of the observations or observational apparatus. In this sense, an observational frame of reference allows study of the effect of motion upon an entire family of coordinate systems that could be attached to this frame. On the other hand, a *coordinate system* may be employed for many purposes where the state of motion is not the primary concern. For example, a coordinate system may be adopted to take advantage of the symmetry of a system. In a still broader perspective, the formulation of many problems in physics employs *generalized coordinates*, *normal modes* or *eigenvectors*, which are only indirectly related to space and time. It seems useful to divorce the various aspects of a reference frame for the discussion below. We therefore take observational frames of reference, coordinate systems, and observational equipment as independent concepts, separated as below:

- An observational frame (such as an inertial frame or non-inertial frame of reference) is a physical concept related to state of motion.
- A coordinate system is a mathematical concept, amounting to a choice of language used to describe observations.^[2] Consequently, an observer in an observational frame of reference can choose to employ any coordinate system (Cartesian, polar, curvilinear, generalized, ...) to describe observations made from that frame of reference. A change in the choice of this coordinate system does not change an observer's state of motion, and so does not entail a change in the observer's *observational* frame of reference. This viewpoint can be found elsewhere as well.^[3] Which is not to dispute that some coordinate systems may be a better choice for some observations than are others.
- Choice of what to measure and with what observational apparatus is a matter separate from the observer's state of motion and choice of coordinate system.

Here is a quotation applicable to moving observational frames \mathfrak{R} and various associated Euclidean three-space coordinate systems $[R, R', \text{etc.}]$:^[4]

“ We first introduce the notion of *reference frame*, itself related to the idea of *observer*: the reference frame is, in some sense, the "Euclidean space carried by the observer". Let us give a more mathematical definition:... the reference frame is... the set of all points in the Euclidean space with the rigid body motion of the observer. The frame, denoted \mathfrak{R} , is said to move with the observer.... The spatial positions of particles are labelled relative to a frame \mathfrak{R} by establishing a *coordinate system* R with origin O . The corresponding set of axes, sharing the rigid body motion of the frame \mathfrak{R} , can be considered to give a physical realization of \mathfrak{R} . In a frame \mathfrak{R} , coordinates are changed from R to R' by carrying out, at each instant of time, the same coordinate transformation on the components of *intrinsic* objects (vectors and tensors) introduced to represent physical quantities *in this frame*. ”

and this on the utility of separating the notions of \mathfrak{R} and $[R, R', \text{etc.}]$:^[5]

“ As noted by Brillouin, a distinction between mathematical sets of coordinates and physical frames of reference must be made. The ignorance of such distinction is the source of much confusion... the dependent functions such as velocity for example, are measured with respect to a physical reference frame, but one is free to choose any mathematical coordinate system in which the equations are specified. ”

and this, also on the distinction between \mathfrak{R} and $[R, R', \text{etc.}]$:^[6]

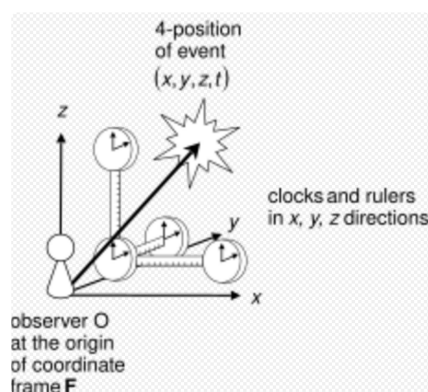
“ The idea of a reference frame is really quite different from that of a coordinate system. Frames differ just when they define different *spaces* (sets of *rest points*) or times (sets of simultaneous events). So the ideas of a space, a time, of rest and simultaneity, go inextricably together with that of frame. However, a mere shift of origin, or a purely spatial rotation of space coordinates results in a new coordinate system. So frames correspond at best to *classes* of coordinate systems. ”

and from J. D. Norton:^[7]

“ In traditional developments of special and general relativity it has been customary not to distinguish between two quite distinct ideas. The first is the notion of a coordinate system, understood simply as the smooth, invertible assignment of four numbers to events in spacetime neighborhoods. The second, the frame of reference, refers to an idealized system used to assign such numbers [...] To avoid unnecessary restrictions, we can divorce this arrangement from metrical notions. [...] Of special importance for our purposes is that each frame of reference has a definite state of motion at each event of spacetime. [...] Within the context of special relativity and as long as we restrict ourselves to frames of reference in inertial motion, then little of importance depends on the difference between an inertial frame of reference and the inertial coordinate system it induces. This comfortable circumstance ceases immediately once we begin to consider frames of reference in nonuniform motion even within special relativity....More recently, to negotiate the obvious ambiguities of Einstein's treatment, the notion of frame of reference has reappeared as a structure distinct from a coordinate system. ”

The discussion is taken beyond simple space-time coordinate systems by Brading and Castellani.^[8] Extension to coordinate systems using generalized coordinates underlies the Hamiltonian and Lagrangian formulations^[9] of quantum field theory, classical relativistic mechanics, and quantum gravity.^{[10][11][12][13][14]}

1.1. Coordinate Systems



An observer O , situated at the origin of a local set of coordinates – a frame of reference F . The observer in this frame uses the coordinates (x, y, z, t) to describe a spacetime event, shown as a star.

Although the term "coordinate system" is often used (particularly by physicists) in a nontechnical sense, the term "coordinate system" does have a precise meaning in mathematics, and sometimes that is what the physicist means as well.

A coordinate system in mathematics is a facet of geometry or of algebra,^{[15][16]} in particular, a property of manifolds (for example, in physics, configuration spaces or phase spaces).^{[17][18]} The coordinates of a point r in an n -dimensional space are simply an ordered set of n numbers:^{[19][20]}

$$\mathbf{r} = [x^1, x^2, \dots, x^n].$$

In a general Banach space, these numbers could be (for example) coefficients in a functional expansion like a Fourier series. In a physical problem, they could be spacetime coordinates or normal mode amplitudes. In a robot design, they could be angles of relative rotations, linear displacements, or deformations of joints.^[21] Here we will suppose these coordinates can be related to a Cartesian coordinate system by a set of functions:

$$x^j = x^j(x, y, z, \dots), \quad j = 1, \dots, n,$$

where x, y, z , etc. are the n Cartesian coordinates of the point. Given these functions, **coordinate surfaces** are defined by the relations:

$$x^j(x, y, z, \dots) = \text{constant}, \quad j = 1, \dots, n.$$

The intersection of these surfaces define **coordinate lines**. At any selected point, tangents to the intersecting coordinate lines at that point define a set of **basis vectors** $\{\mathbf{e}_1, \mathbf{e}_2, \dots, \mathbf{e}_n\}$ at that point. That is:^[22]

$$\mathbf{e}_i(\mathbf{r}) = \lim_{\epsilon \rightarrow 0} \frac{\mathbf{r}(x^1, \dots, x^i + \epsilon, \dots, x^n) - \mathbf{r}(x^1, \dots, x^i, \dots, x^n)}{\epsilon}, \quad i = 1, \dots, n,$$

which can be normalized to be of unit length. For more detail see curvilinear coordinates.

Coordinate surfaces, coordinate lines, and basis vectors are components of a **coordinate system**.^[23] If the basis vectors are orthogonal at every point, the coordinate system is an orthogonal coordinate system.

An important aspect of a coordinate system is its metric tensor g_{jk} , which determines the arc length ds in the coordinate system in terms of its coordinates:^[24]

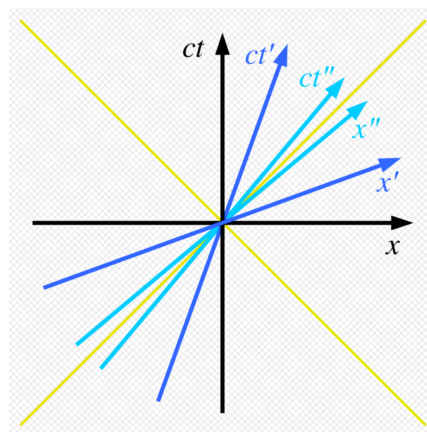
$$(ds)^2 = g_{ik} dx^i dx^k,$$

where repeated indices are summed over.

As is apparent from these remarks, a coordinate system is a mathematical construct, part of an axiomatic system. There is no necessary connection between coordinate systems and physical motion (or any other aspect of reality). However, coordinate systems can include time as a coordinate, and can be used to describe motion. Thus, Lorentz transformations and Galilean transformations may be viewed as coordinate transformations.

General and specific topics of coordinate systems can be pursued following the See also links below.

1.2. Observational Frames of Reference



Three frames of reference in special relativity. The black frame is at rest. The primed frame moves at 40% of light speed, and the double primed frame at 80%. Note the scissors-like change as speed increases.

An **observational frame of reference**, often referred to as a *physical frame of reference*, a *frame of reference*, or simply a *frame*, is a physical concept related to an observer and the observer's state of motion. Here we adopt the view expressed by Kumar and Barve: an observational frame of reference is characterized *only by its state of motion*.^[25] However, there is lack of unanimity on this point. In special relativity, the distinction is sometimes made between an *observer* and a *frame*. According to this view, a *frame* is an *observer* plus a coordinate lattice constructed to be an orthonormal right-handed set of spacelike vectors perpendicular to a timelike vector. See Doran.^[26] This restricted view is

not used here, and is not universally adopted even in discussions of relativity.^{[27][28]} In general relativity the use of general coordinate systems is common (see, for example, the Schwarzschild solution for the gravitational field outside an isolated sphere^[29]).

There are two types of observational reference frame: inertial and non-inertial. An inertial frame of reference is defined as one in which all laws of physics take on their simplest form. In special relativity these frames are related by Lorentz transformations, which are parametrized by rapidity. In Newtonian mechanics, a more restricted definition requires only that Newton's first law holds true; that is, a Newtonian inertial frame is one in which a free particle travels in a straight line at constant speed, or is at rest. These frames are related by Galilean transformations. These relativistic and Newtonian transformations are expressed in spaces of general dimension in terms of representations of the Poincaré group and of the Galilean group.

In contrast to the inertial frame, a non-inertial frame of reference is one in which fictitious forces must be invoked to explain observations. An example is an observational frame of reference centered at a point on the Earth's surface. This frame of reference orbits around the center of the Earth, which introduces the fictitious forces known as the Coriolis force, centrifugal force, and gravitational force. (All of these forces including gravity disappear in a truly inertial reference frame, which is one of free-fall.)

1.3. Measurement Apparatus

A further aspect of a frame of reference is the role of the measurement apparatus (for example, clocks and rods) attached to the frame (see Norton quote above). This question is not addressed in this article, and is of particular interest in quantum mechanics, where the relation between observer and measurement is still under discussion (see measurement problem).

In physics experiments, the frame of reference in which the laboratory measurement devices are at rest is usually referred to as the laboratory frame or simply "lab frame." An example would be the frame in which the detectors for a particle accelerator are at rest. The lab frame in some experiments is an inertial frame, but it is not required to be (for example the laboratory on the surface of the Earth in many physics experiments is not inertial). In particle physics experiments, it is often useful to transform energies and momenta of particles from the lab frame where they are measured, to the center of momentum frame "COM frame" in which calculations are sometimes simplified, since potentially all kinetic energy still present in the COM frame may be used for making new particles.

In this connection it may be noted that the clocks and rods often used to describe observers' measurement equipment in thought, in practice are replaced by a much more complicated and indirect metrology that is connected to the nature of the vacuum, and uses atomic clocks that operate according to the standard model and that must be corrected for gravitational time dilation.^[30] (See second, meter and kilogram).

In fact, Einstein felt that clocks and rods were merely expedient measuring devices and they should be replaced by more fundamental entities based upon, for example, atoms and molecules.^[31]

2. Examples of Inertial Frames of Reference

2.1. Simple Example

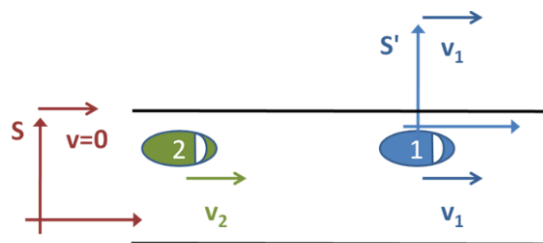


Figure 1: Two cars moving at different but constant velocities observed from stationary inertial frame S attached to the road and moving inertial frame S' attached to the first car.

Consider a situation common in everyday life. Two cars travel along a road, both moving at constant velocities. See Figure 1. At some particular moment, they are separated by 200 metres. The car in front is travelling at 22 metres per second and the car behind is travelling at 30 metres per second. If we want to find out how long it will take the second car to catch up with the first, there are three obvious "frames of reference" that we could choose.

First, we could observe the two cars from the side of the road. We define our "frame of reference" S as follows. We stand on the side of the road and start a stop-clock at the exact moment that the second car passes us, which happens to be when they are a distance $d = 200$ m apart. Since neither of the cars is accelerating, we can determine their positions by the following formulas, where $x_1(t)$ is the position in meters of car one after time t in seconds and $x_2(t)$ is the position of car two after time t .

$$x_1(t) = d + v_1 t = 200 + 22t, \quad x_2(t) = v_2 t = 30t.$$

Notice that these formulas predict at $t = 0$ s the first car is 200 m down the road and the second car is right beside us, as expected. We want to find the time at which $x_1 = x_2$. Therefore, we set $x_1 = x_2$ and solve for t , that is:

$$\begin{aligned} 200 + 22t &= 30t, \\ 8t &= 200, \\ t &= 25 \text{ seconds.} \end{aligned}$$

Alternatively, we could choose a frame of reference S' situated in the first car. In this case, the first car is stationary and the second car is approaching from behind at a speed of $v_2 - v_1 = 8$ m/s. In order to catch up to the first car, it will take a time of $d/v_2 - v_1 = 200/8$ s, that is, 25 seconds, as before. Note how much easier the problem becomes by choosing a suitable frame of reference. The third possible frame of reference would be attached to the second car. That example resembles the case just discussed, except the second car is stationary and the first car moves backward towards it at 8 m/s.

It would have been possible to choose a rotating, accelerating frame of reference, moving in a complicated manner, but this would have served to complicate the problem unnecessarily. It is also necessary to note that one is able to convert measurements made in one coordinate system to another. For example, suppose that your watch is running five minutes fast compared to the local standard time. If you know that this is the case, when somebody asks you what time it is, you are able to deduct five minutes from the time displayed on your watch in order to obtain the correct time. The measurements that an observer makes about a system depend therefore on the observer's frame of reference (you might say that the bus arrived at 5 past three, when in fact it arrived at three).

2.2. Additional Example

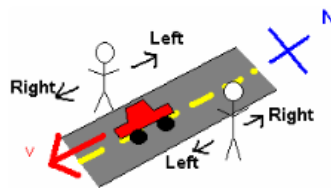


Figure 2: Simple-minded frame-of-reference example

For a simple example involving only the orientation of two observers, consider two people standing, facing each other on either side of a north-south street. See Figure 2. A car drives past them heading south. For the person facing east, the car was moving towards the right. However, for the person facing west, the car was moving toward the left. This discrepancy is because the two people used two different frames of reference from which to investigate this system.

For a more complex example involving observers in relative motion, consider Alfred, who is standing on the side of a road watching a car drive past him from left to right. In his frame of reference, Alfred defines the spot where he is standing as the origin, the road as the x -axis and the direction in front of him as the positive y -axis. To him, the car moves along the x axis with some velocity v in the positive x -direction. Alfred's frame of reference is considered an inertial frame of reference because he is not accelerating (ignoring effects such as Earth's rotation and gravity).

Now consider Betsy, the person driving the car. Betsy, in choosing her frame of reference, defines her location as the origin, the direction to her right as the positive x -axis, and the direction in front of her as the positive y -axis. In this frame of reference, it is Betsy who is stationary and the world around her that is moving – for instance, as she drives past Alfred, she observes him moving with velocity v in the negative y -direction. If she is driving north, then north is the positive y -direction; if she turns east, east becomes the positive y -direction.

Finally, as an example of non-inertial observers, assume Candace is accelerating her car. As she passes by him, Alfred measures her acceleration and finds it to be a in the negative x -direction. Assuming Candace's acceleration is constant, what acceleration does Betsy measure? If Betsy's velocity v is constant, she is in an inertial frame of reference, and she will find the acceleration to be the same as Alfred in her frame of reference, a in the negative y -direction. However, if she is accelerating at rate A in the negative y -direction (in other words, slowing down), she will find Candace's acceleration to

be $a' = a - A$ in the negative y -direction—a smaller value than Alfred has measured. Similarly, if she is accelerating at rate A in the positive y -direction (speeding up), she will observe Candace's acceleration as $a' = a + A$ in the negative y -direction—a larger value than Alfred's measurement.

Frames of reference are especially important in special relativity, because when a frame of reference is moving at some significant fraction of the speed of light, then the flow of time in that frame does not necessarily apply in another frame. The speed of light is considered to be the only true constant between moving frames of reference.

2.3. Remarks

It is important to note some assumptions made above about the various inertial frames of reference. Newton, for instance, employed universal time, as explained by the following example. Suppose that you own two clocks, which both tick at exactly the same rate. You synchronize them so that they both display exactly the same time. The two clocks are now separated and one clock is on a fast moving train, traveling at constant velocity towards the other. According to Newton, these two clocks will still tick at the same rate and will both show the same time. Newton says that the rate of time as measured in one frame of reference should be the same as the rate of time in another. That is, there exists a "universal" time and all other times in all other frames of reference will run at the same rate as this universal time irrespective of their position and velocity. This concept of time and simultaneity was later generalized by Einstein in his special theory of relativity (1905) where he developed transformations between inertial frames of reference based upon the universal nature of physical laws and their economy of expression (Lorentz transformations).

The definition of inertial reference frame can also be extended beyond three-dimensional Euclidean space. Newton's assumed a Euclidean space, but general relativity uses a more general geometry. As an example of why this is important, consider the geometry of an ellipsoid. In this geometry, a "free" particle is defined as one at rest or traveling at constant speed on a geodesic path. Two free particles may begin at the same point on the surface, traveling with the same constant speed in different directions. After a length of time, the two particles collide at the opposite side of the ellipsoid. Both "free" particles traveled with a constant speed, satisfying the definition that no forces were acting. No acceleration occurred and so Newton's first law held true. This means that the particles were in inertial frames of reference. Since no forces were acting, it was the geometry of the situation which caused the two particles to meet each other again. In a similar way, it is now common to describe^[22] that we exist in a four-dimensional geometry known as spacetime. In this picture, the curvature of this 4D space is responsible for the way in which two bodies with mass are drawn together even if no forces are acting. This curvature of spacetime replaces the force known as gravity in Newtonian mechanics and special relativity.

3. Non-inertial Frames

Here the relation between inertial and non-inertial observational frames of reference is considered. The basic difference between these frames is the need in non-inertial frames for fictitious forces, as described below.

An accelerated frame of reference is often delineated as being the "primed" frame, and all variables that are dependent on that frame are notated with primes, e.g. x' , y' , a' .

The vector from the origin of an inertial reference frame to the origin of an accelerated reference frame is commonly notated as \mathbf{R} . Given a point of interest that exists in both frames, the vector from the inertial origin to the point is called \mathbf{r} , and the vector from the accelerated origin to the point is called \mathbf{r}' . From the geometry of the situation, we get

$$\mathbf{r} = \mathbf{R} + \mathbf{r}'.$$

Taking the first and second derivatives of this with respect to time, we obtain

$$\begin{aligned}\mathbf{v} &= \mathbf{V} + \mathbf{v}', \\ \mathbf{a} &= \mathbf{A} + \mathbf{a}'.\end{aligned}$$

where \mathbf{V} and \mathbf{A} are the velocity and acceleration of the accelerated system with respect to the inertial system and \mathbf{v} and \mathbf{a} are the velocity and acceleration of the point of interest with respect to the inertial frame.

These equations allow transformations between the two coordinate systems; for example, we can now write Newton's second law as

$$\mathbf{F} = m\mathbf{a} = m\mathbf{A} + m\mathbf{a}'.$$

When there is accelerated motion due to a force being exerted there is manifestation of inertia. If an electric car designed to recharge its battery system when decelerating is switched to braking, the batteries are recharged, illustrating the physical strength of manifestation of inertia. However, the manifestation of inertia does not prevent acceleration (or deceleration), for manifestation of inertia occurs in response to change in velocity due to a force. Seen from the perspective of a rotating frame of reference the manifestation of inertia appears to exert a force (either in centrifugal direction, or in a direction orthogonal to an object's motion, the Coriolis effect).

A common sort of accelerated reference frame is a frame that is both rotating and translating (an example is a frame of reference attached to a CD which is playing while the player is carried). This arrangement leads to the equation (see Fictitious force for a derivation):

Undefined control sequence $\boldsymbol{\cdot}$

or, to solve for the acceleration in the accelerated frame,

Undefined control sequence $\boldsymbol{\cdot}$

Multiplying through by the mass m gives

$$\mathbf{F}' = \mathbf{F}_{\text{physical}} + \mathbf{F}'_{\text{Euler}} + \mathbf{F}'_{\text{Coriolis}} + \mathbf{F}'_{\text{centripetal}} - m\mathbf{A}_0,$$

where

Undefined control sequence $\boldsymbol{\cdot}$ (Euler force),

Undefined control sequence $\boldsymbol{\cdot}$ (Coriolis force),

Undefined control sequence $\boldsymbol{\cdot}$ (centrifugal force).

4. Particular Frames of Reference in Common Use

- International Terrestrial Reference Frame
- International Celestial Reference Frame
- In fluid mechanics, Lagrangian and Eulerian specification of the flow field

4.1. Other Frames

- Frame fields in general relativity
- Linguistic frame of reference
- Moving frame in mathematics

References

1. The distinction between macroscopic and microscopic frames shows up, for example, in electromagnetism where constitutive relations of various time and length scales are used to determine the current and charge densities entering Maxwell's equations. See, for example, Kurt Edmund Oughstun (2006). *Electromagnetic and Optical Pulse Propagation 1: Spectral Representations in Temporally Dispersive Media*. Springer. p. 165. ISBN 0-387-34599-X. <https://books.google.com/books?id=behRnNRiueAC&pg=PA165&dq=macroscopic+frame++electromagnetism>. . These distinctions also appear in thermodynamics. See Paul McEvoy (2002). *Classical Theory. MicroAnalytix*. p. 205. ISBN 1-930832-02-8. <https://books.google.com/books?id=dj0wFlxn-PoC&pg=PA206&dq=macroscopic+frame#PPA205,M1>. .
2. In very general terms, a coordinate system is a set of arcs $x_i = x_i(t)$ in a complex Lie group; see Lev Semenovich Pontriagin (1986). *L.S. Pontryagin: Selected Works Vol. 2: Topological Groups* (3rd ed.). Gordon and Breach. p. 429. ISBN 2-88124-133-6. https://books.google.com/books?id=JU0DT_wXu2oC&pg=PA429&dq=algebra+%22coordinate+system%22. . Less abstractly, a coordinate system in a space of n -dimensions is defined in terms of a basis set of vectors $\{e_1, e_2, \dots, e_n\}$; see Edoardo Sernesi; J. Montaldi (1993). *Linear Algebra: A Geometric Approach*. CRC Press. p. 95. ISBN 0-412-40680-2. <https://books.google.com/books?id=1dZOuFo1QYMC&pg=PA95&dq=algebra+%22coordinate+system%22>. As such, the coordinate system is a mathematical construct, a language, that may be related to motion, but has no necessary connection to motion.
3. J X Zheng-Johansson; Per-Ivar Johansson (2006). *Unification of Classical, Quantum and Relativistic Mechanics and of the Four Forces*. Nova Publishers. p. 13. ISBN 1-59454-260-0. <https://books.google.com/books?id=11FU37uru6QC&pg=PA13&dq=frame+coordinate+johansson>.

4. Jean Salençon; Stephen Lyle (2001). *Handbook of Continuum Mechanics: General Concepts, Thermoelasticity*. Springer. p. 9. ISBN 3-540-41443-6. <https://books.google.com/books?id=H3xIED8ctfUC&pg=PA9&dq=physical+%22frame+of+reference%22>.
5. Patrick Cornille (Akhlesh Lakhtakia, editor) (1993). *Essays on the Formal Aspects of Electromagnetic Theory*. World Scientific. p. 149. ISBN 981-02-0854-5. <https://books.google.com/books?id=qsOBhKVM1qYC&pg=PA149&dq=coordinate+system+%22reference+frame%22>.
6. Graham Nerlich (1994). *What Spacetime Explains: Metaphysical essays on space and time*. Cambridge University Press. p. 64. ISBN 0-521-45261-9. <https://books.google.com/books?id=fKK7rKOpc7AC&pg=PA64&dq=%22idea+of+a+reference+frame%22>.
7. John D. Norton (1993). General covariance and the foundations of general relativity: eight decades of dispute, *Rep. Prog. Phys.*, 56, pp. 835-7. <http://www.pitt.edu/~jdnorton/papers/decades.pdf>
8. Katherine Brading; Elena Castellani (2003). *Symmetries in Physics: Philosophical Reflections*. Cambridge University Press. p. 417. ISBN 0-521-82137-1. <https://books.google.com/books?id=SnmBN64cAdYC&pg=PA417&dq=%22idea+of+a+reference+frame%22>.
9. Oliver Davis Johns (2005). *Analytical Mechanics for Relativity and Quantum Mechanics*. Oxford University Press. Chapter 16. ISBN 0-19-856726-X. <https://books.google.com/books?id=PNum9YDN8CIC&pg=PA318&dq=coordinate+observer#PPA276,M1>.
10. Donald T Greenwood (1997). *Classical dynamics* (Reprint of 1977 edition by Prentice-Hall ed.). Courier Dover Publications. p. 313. ISBN 0-486-69690-1. <https://books.google.com/books?id=x7rj83l98yMC&pg=RA2-PA314&dq=%22relativistic+%22+Lagrangian+OR+Hamiltonian#PRA2-PA313,M1>.
11. Matthew A. Trump; W. C. Schieve (1999). *Classical Relativistic Many-Body Dynamics*. Springer. p. 99. ISBN 0-7923-5737-X. <https://books.google.com/books?id=g2yfLOp0IzWC&pg=PA99&dq=relativity+%22generalized+coordinates%22#PPA99,M1>.
12. A S Kompaneys (2003). *Theoretical Physics* (Reprint of the 1962 2nd ed.). Courier Dover Publications. p. 118. ISBN 0-486-49532-9. <https://books.google.com/books?id=CQ2gBrL5T4YC&pg=PA118&dq=relativity+%22generalized+coordinates%22>.
13. M Srednicki (2007). *Quantum Field Theory*. Cambridge University Press. Chapter 4. ISBN 978-0-521-86449-7. <https://books.google.com/books?id=5OepxIG42B4C&pg=PA266&dq=isbn=9780521864497#PPA31,M1>.
14. Carlo Rovelli (2004). *Quantum Gravity*. Cambridge University Press. p. 98 ff. ISBN 0-521-83733-2. <https://books.google.com/books?id=HrAZTmXdssQC&pg=PA179&dq=%22relativistic+%22+Lagrangian+OR+Hamiltonian#PPA98,M1>.
15. William Barker; Roger Howe (2008). *Continuous symmetry: from Euclid to Klein*. American Mathematical Society. p. 18 ff. ISBN 978-0-8218-3900-3. <https://books.google.com/books?id=NlxExnr2EjYC&pg=PA17&dq=geometry++axiom+%22coordinate+system%22#PPA18,M1>.
16. Arlan Ramsay; Robert D. Richtmyer (1995). *Introduction to Hyperbolic Geometry*. Springer. p. 11. ISBN 0-387-94339-0. <https://archive.org/details/introductiontohy0000rams/geometry+axiom+coordinate+system/>.
17. According to Hawking and Ellis: "A manifold is a space locally similar to Euclidean space in that it can be covered by coordinate patches. This structure allows differentiation to be defined, but does not distinguish between different coordinate systems. Thus, the only concepts defined by the manifold structure are those that are independent of the choice of a coordinate system." Stephen W. Hawking; George Francis Rayner Ellis (1973). *The Large Scale Structure of Space-Time*. Cambridge University Press. p. 11. ISBN 0-521-09906-4. https://books.google.com/books?id=QagG_KI7Ll8C&pg=PA59&dq=manifold+%22The+Large+Scale+Structure+of+Space-Time%22#PPA11,M1. A mathematical definition is: A connected Hausdorff space M is called an n -dimensional manifold if each point of M is contained in an open set that is homeomorphic to an open set in Euclidean n -dimensional space.
18. Shigeyuki Morita; Teruko Nagase; Katsumi Nomizu (2001). *Geometry of Differential Forms*. American Mathematical Society Bookstore. p. 12. ISBN 0-8218-1045-6. <https://archive.org/details/geometryofdiffer00mori/geometry+axiom+coordinate+system/>.
19. Granino Arthur Korn; Theresa M. Korn (2000). *Mathematical handbook for scientists and engineers : definitions, theorems, and formulas for reference and review*. Courier Dover Publications. p. 169. ISBN 0-486-41147-8. <https://books.google.com/books?id=xHNd5zCXt-EC&pg=PA169&dq=curvilinear+%22coordinate+system%22#PPA169,M1>.
20. See Encarta definition. Archived 2009-10-31. [https://encarta.msn.com/encyclopedia_761579532/Coordinate_System_\(mathematics\).html](https://encarta.msn.com/encyclopedia_761579532/Coordinate_System_(mathematics).html)

21. Katsu Yamane (2004). *Simulating and Generating Motions of Human Figures*. Springer. pp. 12–13. ISBN 3-540-20317-6. <https://books.google.com/books?id=tNrMilx3fToC&pg=PA12&dq=generalized+coordinates+%22kinematic+chain%22#PPA13,M1>.
22. Achilles Papapetrou (1974). *Lectures on General Relativity*. Springer. p. 5. ISBN 90-277-0540-2. <https://books.google.com/books?id=SWeOggyp1ZsC&pg=PA3&dq=relativistic++%22general+coordinates%22#PPA5,M1>.
23. Wilford Zdunkowski; Andreas Bott (2003). *Dynamics of the Atmosphere*. Cambridge University Press. p. 84. ISBN 0-521-00666-X. <https://books.google.com/books?id=GuYvC21v3g8C&pg=RA1-PA84&dq=%22curvilinear+coordinate+system%22>.
24. A. I. Borisenko; I. E. Tarapov; Richard A. Silverman (1979). *Vector and Tensor Analysis with Applications*. Courier Dover Publications. p. 86. ISBN 0-486-63833-2. <https://books.google.com/books?id=CRljlx2ac6AC&pg=PA86&dq=coordinate+metric>.
25. See Arvind Kumar; Shrish Barve (2003). *How and Why in Basic Mechanics*. Orient Longman. p. 115. ISBN 81-7371-420-7. <https://books.google.com/books?id=czlUPz38MOQC&pg=PA115&dq=%22characterized+only+by+its+state+of+motion%22+inauthor:Kumar>.
26. Chris Doran; Anthony Lasenby (2003). *Geometric Algebra for Physicists*. Cambridge University Press. p. §5.2.2, p. 133. ISBN 978-0-521-71595-9. http://www.worldcat.org/search?q=9780521715959&qt=owc_search.
27. For example, Møller states: "Instead of Cartesian coordinates we can obviously just as well employ general curvilinear coordinates for the fixation of points in physical space....we shall now introduce general "curvilinear" coordinates ξ in four-space...." C. Møller (1952). *The Theory of Relativity*. Oxford University Press. p. 222 and p. 233.
28. A. P. Lightman; W. H. Press; R. H. Price; S. A. Teukolsky (1975). *Problem Book in Relativity and Gravitation*. Princeton University Press. p. 15. ISBN 0-691-08162-X. <https://archive.org/details/problembookinrel00ligh>. "relativistic general coordinates."
29. Richard L Faber (1983). *Differential Geometry and Relativity Theory: an introduction*. CRC Press. p. 211. ISBN 0-8247-1749-X. https://books.google.com/books?id=ctM3_afLuVEC&pg=PA149&dq=relativistic++%22general+coordinates%22#PPA211,M1.
30. Richard Wolfson (2003). *Simply Einstein*. W W Norton & Co.. p. 216. ISBN 0-393-05154-4. <https://books.google.com/books?id=OUJWKdIFKeQC&pg=PA216&dq=%22gravitational+time+dilation+%22>.
31. See Guido Rizzi; Matteo Luca Ruggiero (2003). *Relativity in rotating frames*. Springer. p. 33. ISBN 1-4020-1805-3. https://books.google.com/books?id=_PGrlCLkklgC&pg=PA226&dq=centrifugal+%22+%22+relativity+OR+relativistic#PPA33,M1.
32. That is, both descriptions are equivalent and can be used as needed. This equivalence does not hold outside of general relativity, e.g., in entropic gravity.